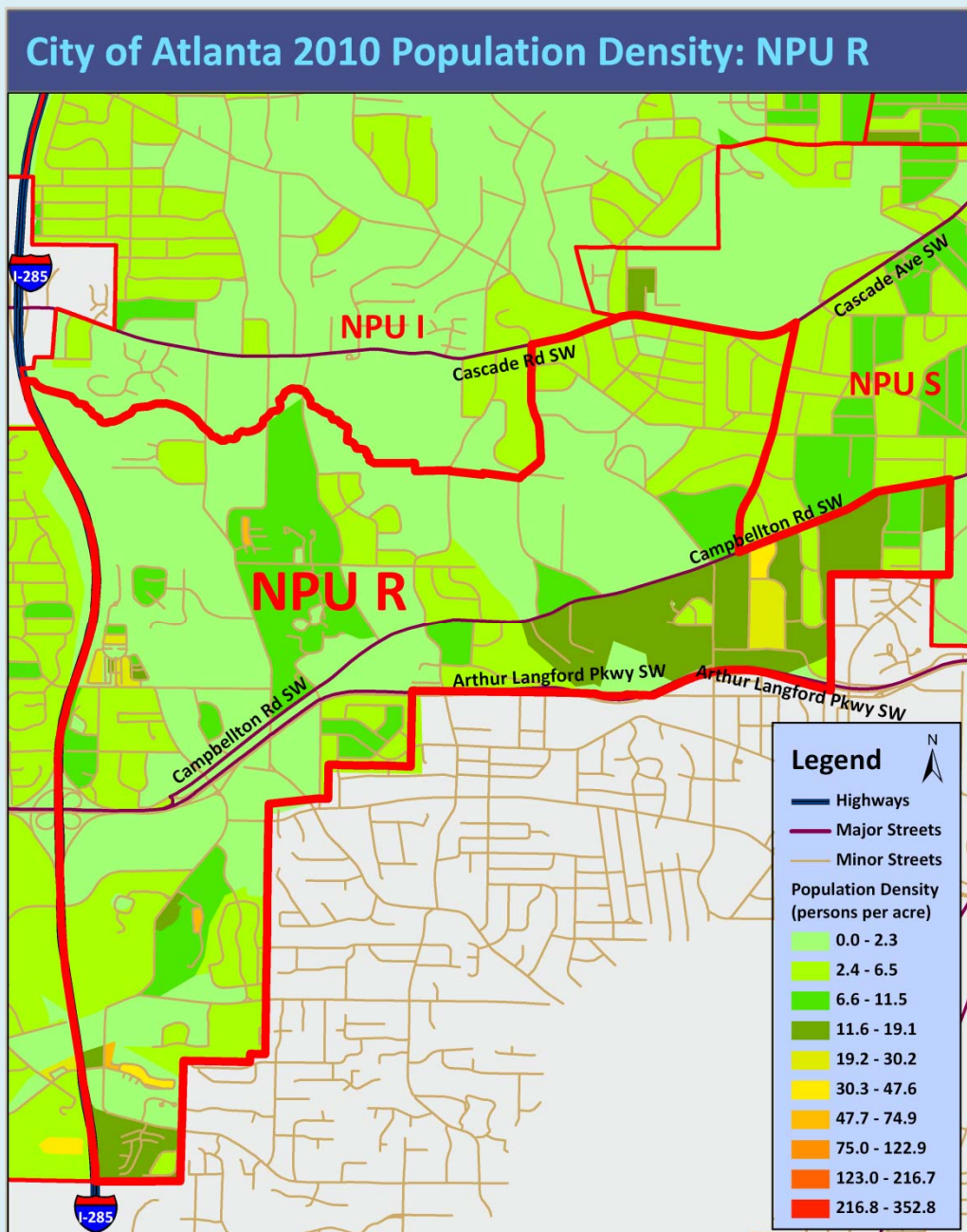


City of Atlanta

2010 Census Summary Report Neighborhood Planning Unit R



City of Atlanta Department of Planning and Community Development – Office of Planning- 404-330-6145- www.atlantaga.org

CITY OF ATLANTA – NPU R: 2010 POPULATION

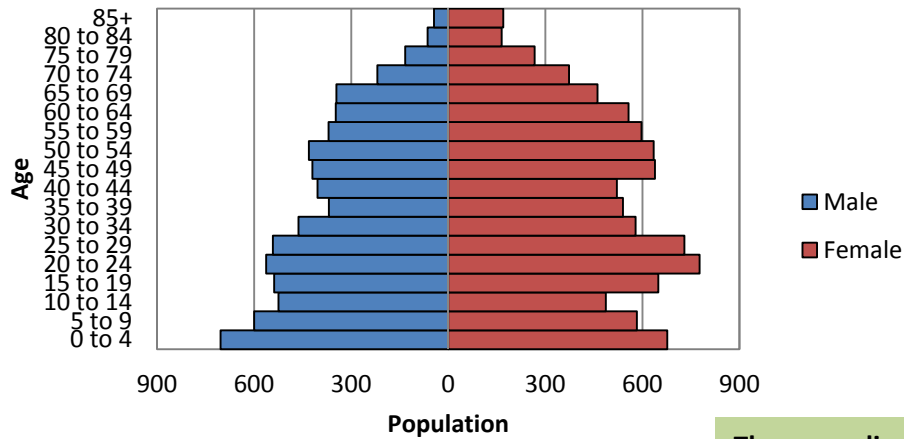
According to the 2010 U.S. Census, the population of Neighborhood Planning Unit (NPU) R is 16,490, a decrease of 189 (1%) from a 2000 population of 16,679.

The Map shows the population density (persons per acre) of each Census Block in NPU R. NPU R has an overall density of 4.8 persons per acre.



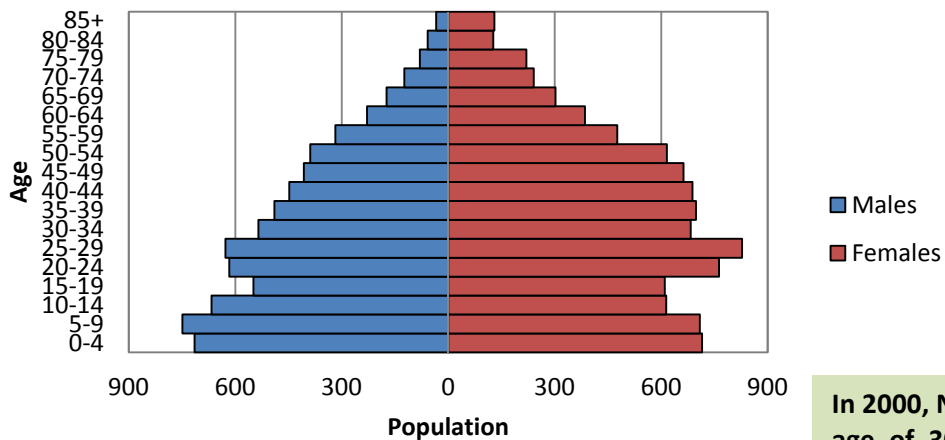
AGE

2010 Age Population Pyramid - NPU R



The median age of the population is 34.2. Twenty-six percent of the population is under 18, 14% of the population is over 65 and 28% of the population is between 20 and 39 years old.

2000 Age Population Pyramid - NPU R

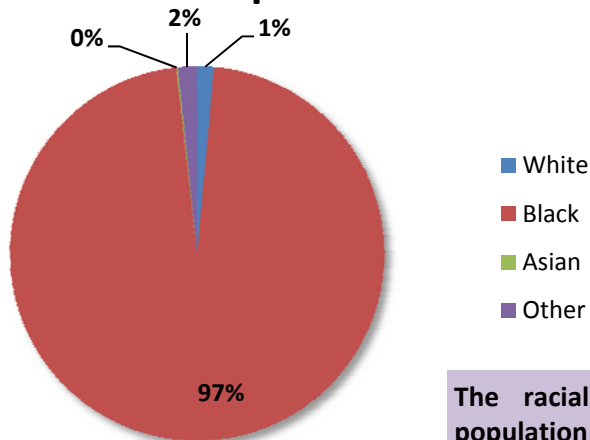


In 2000, NPU R had a median age of 30.7. Six percent of the population was over 65 and 31% of the population was between 20 and 39 years old.



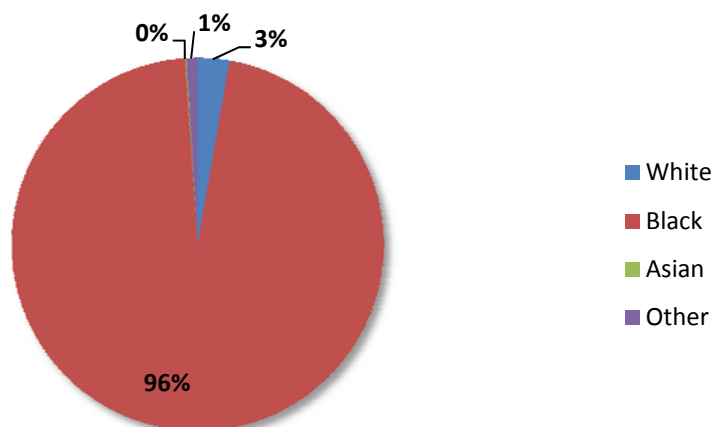
RACE

2010 Racial Composition - NPU R



The racial composition of the NPU R population is 97% is Black, 2% White, 0% is Asian, and 2% Other (Native American, Pacific Islander, other and two or more races). One percent of the population is of Hispanic or Latin Origin.

2000 Racial Composition - NPU R

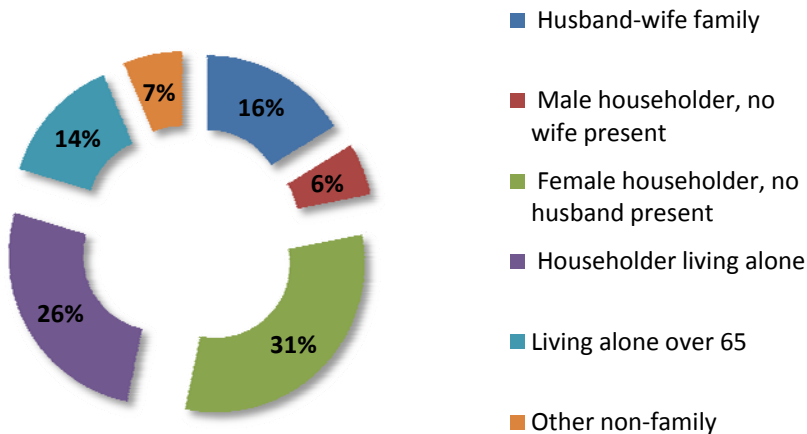


In 2000, the racial composition of NPU R was 96% Black, 3% White, 0% Asian and 1% Other (Native American, Pacific Islander, two or more races and Other). One percent of the population was of Hispanic or Latin Origin.



HOUSEHOLDS

2010 Household Composition - NPU R



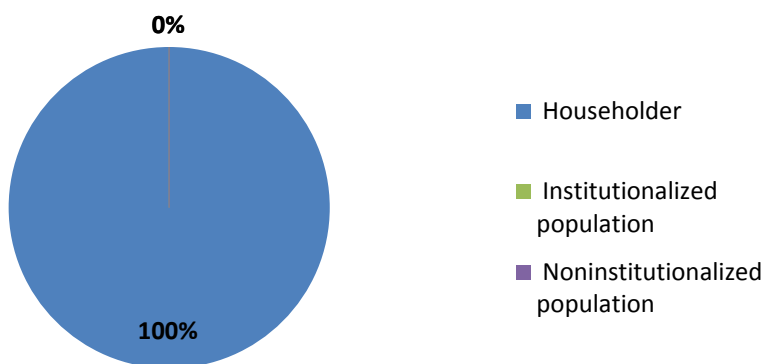
There are 16,490 NPU R residents in 7,259 households. Of these, 53% are family households and 47% are non-family households. Of all households, 30% have children under age 18 and 27% have an individual 65 years and older.

Forty percent of households are single person households, with 14% being single person households over 65, 31% are female headed households and 16% are husband and wife households.

The average household size is 2.27 persons per household and the average family size is 3.09 persons per family.

In 2000, of the 6,877 households in NPU R, 39% of households had children under age 18 and 33% were single person households. The average household size was 2.4 persons per household.

2010 Household and Group Quarter Population - NPU R

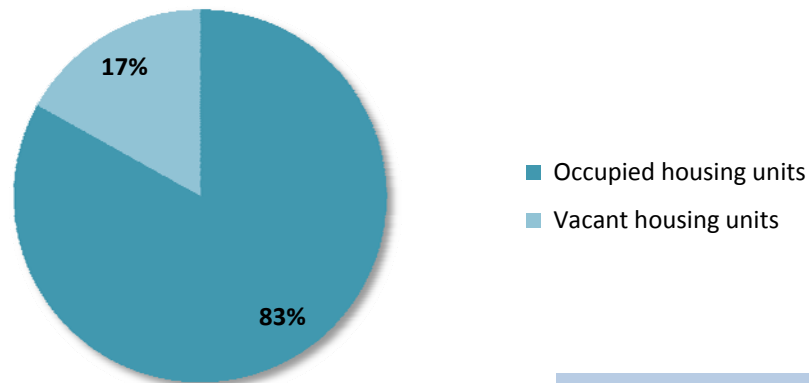


100% of NPU R's population is in households.



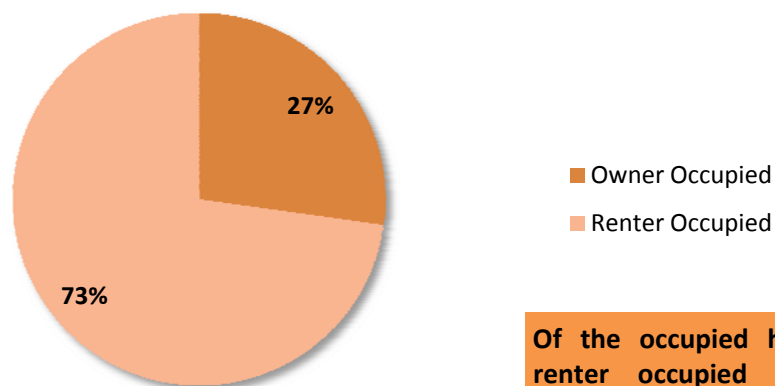
HOUSING

2010 Housing Occupancy - NPU R



NPU R has 8,733 housing units, an increase of 1,195 (16%) housing units from 7,538 in 2000. 83% are occupied and 17% are vacant. Rental units have 16% vacancy rate while owner occupied units have a 5% vacancy rate.

2010 Housing Tenure - NPU R



Of the occupied housing units, 73% are renter occupied and 27% are owner occupied. In 2000, 71% of the occupied homes were renter occupied and 29% were owner occupied.

Renter occupied units have a slightly larger household size (2.3) than owner occupied units (2.2).