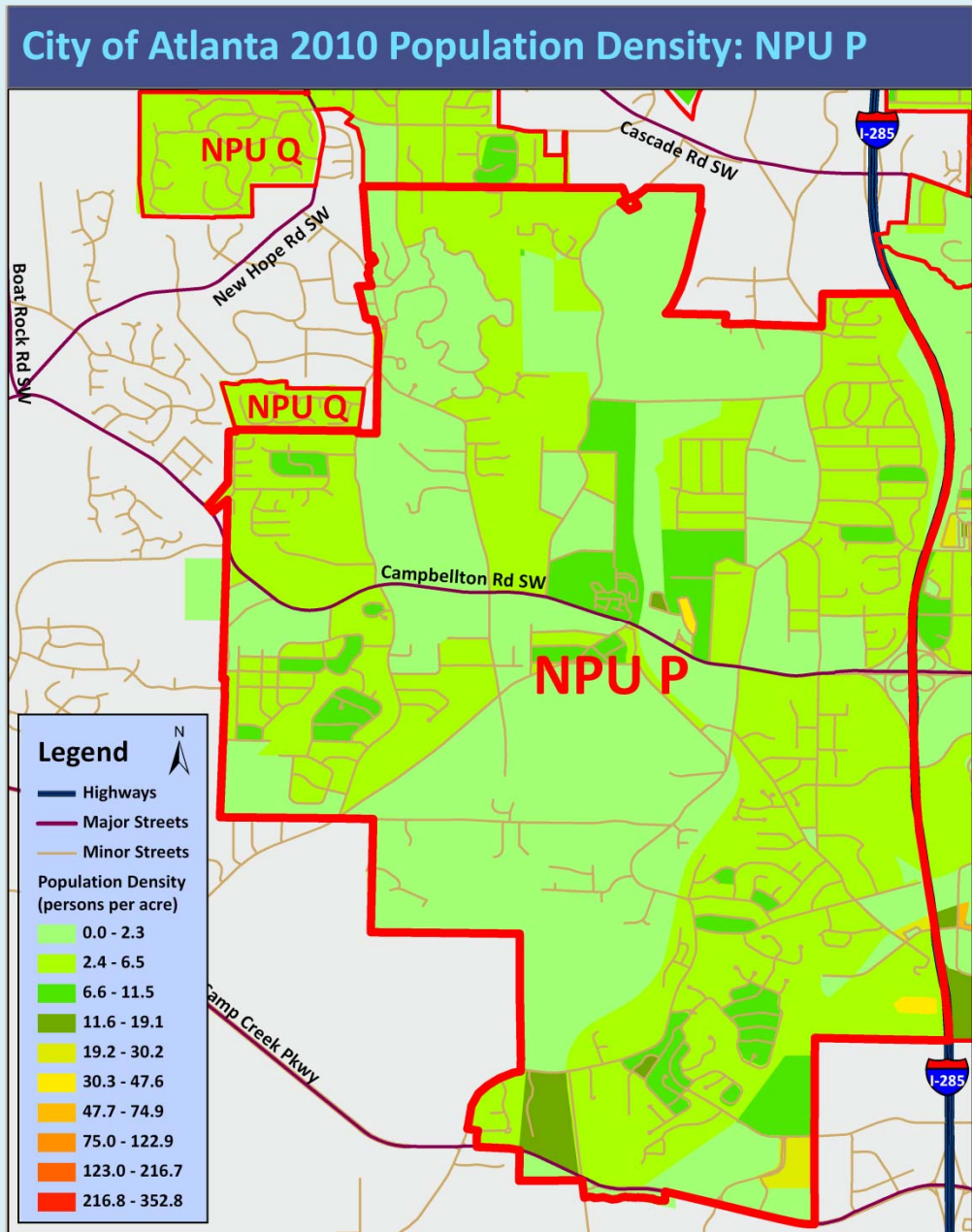


City of Atlanta

2010 Census Summary Report Neighborhood Planning Unit P



CITY OF ATLANTA – NPU P: 2010 POPULATION

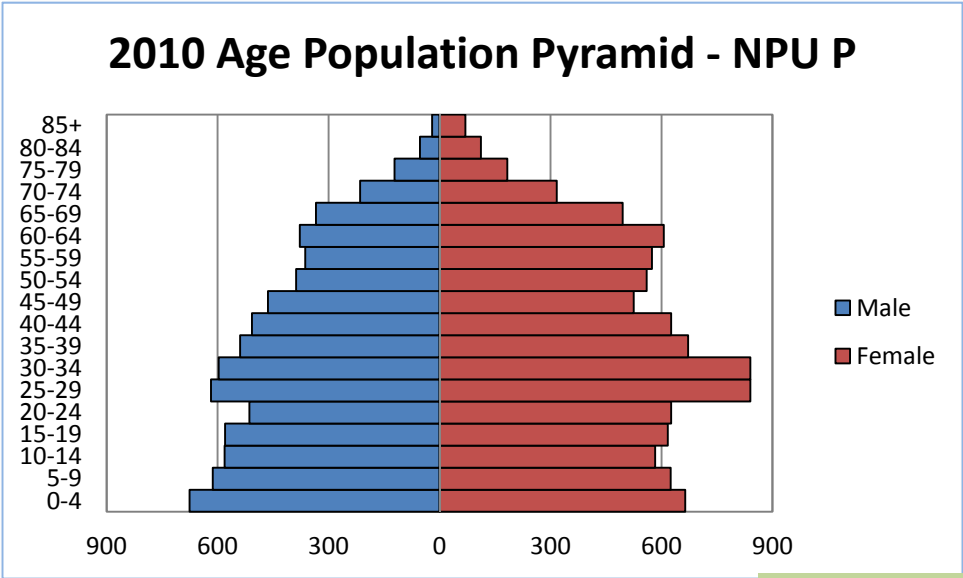
According to the 2010 U.S. Census, the population of Neighborhood Planning Unit (NPU) P is 17,097, an increase of 5,186 (44%) from a 2000 population of 11,911.

The Map shows the population density (persons per acre) of each Census Block in NPU P. NPU P has an overall density of 3 persons per acre.

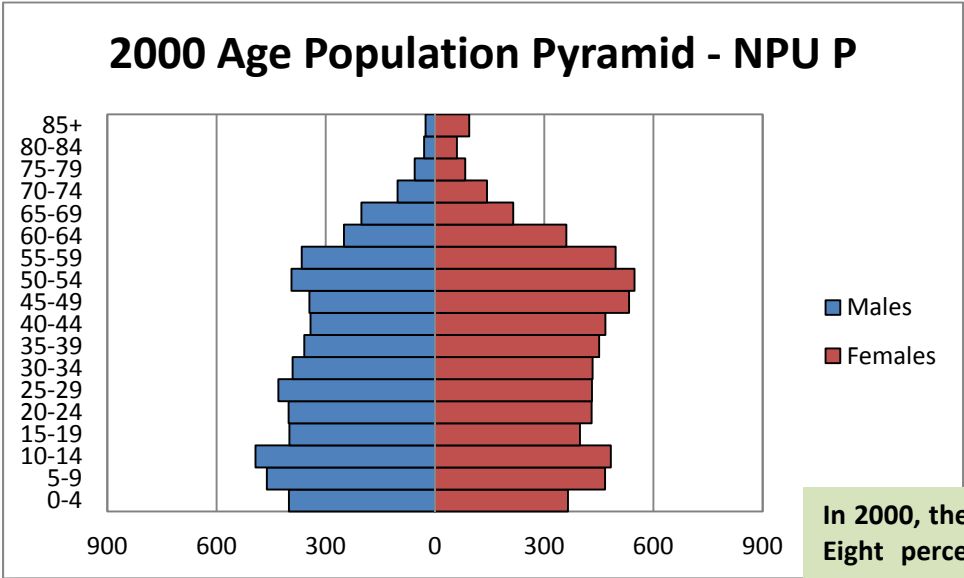
City of Atlanta 2010 Census Summary



AGE



The median age of the population is 33.5. Twenty-six percent of the population is under 18, 11% of the population is over 65 and 30% of the population is between 20 and 39 years old.

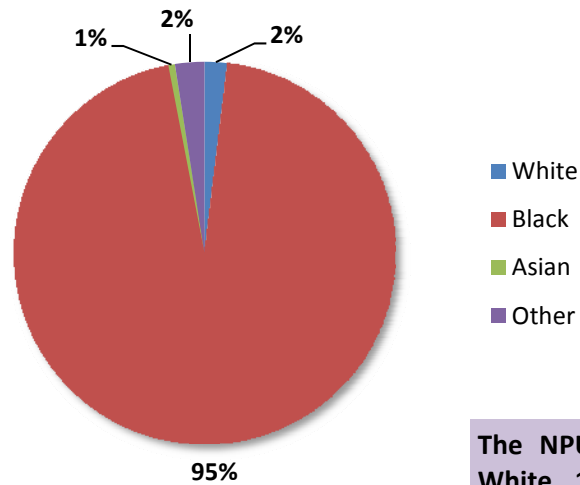


In 2000, the median age was 34.8. Eight percent of the population was over 65 and 28% of the population was between 20 and 39 years old.



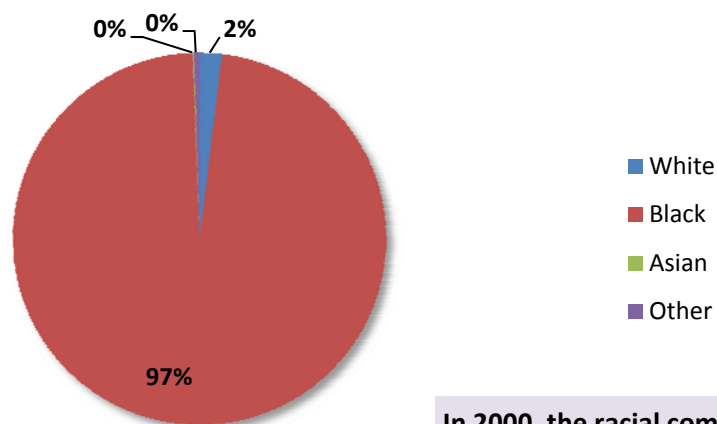
RACE

2010 Racial Composition - NPU P



The NPU P population is 95% Black, 2% White, 1% is Asian, 2 % is other (Native American, Pacific Islander, other and two or more races). Two percent of the population is of Hispanic or Latin Origin.

2000 Racial Composition - NPU P



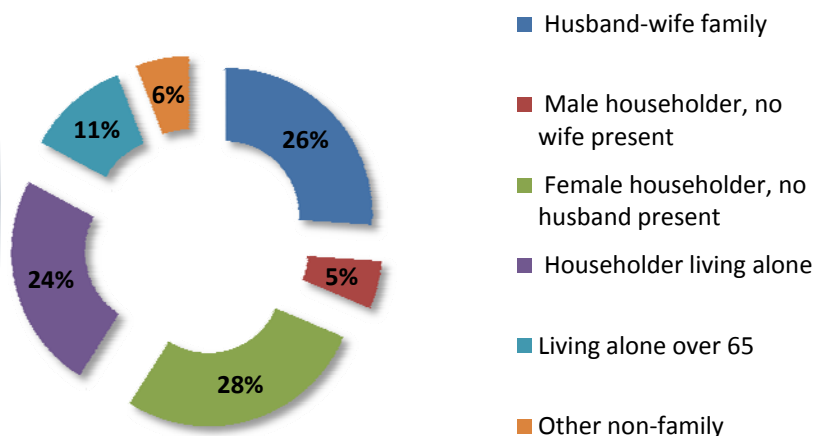
In 2000, the racial composition of NPU P was 97% Black, 2% White, 0% Asian and 0% Other (Native American, Pacific Islander, two or more races and Other). Less than one percent of the population was of Hispanic or Latin Origin.

City of Atlanta 2010 Census Summary



HOUSEHOLDS

2010 Household Composition - NPU P



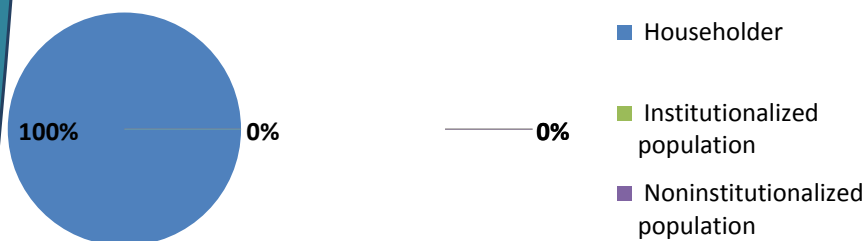
There are 17,097 NPU P residents in 7,004 households. Of these, 59% are family households and 41% are non-family households. Of all households, 34% have children under age 18 and 21% have an individual 65 years and older.

Thirty-five percent of households are single person households, with 11% being single person households over 65, 28% are female headed households and 26% are husband and wife households.

The average household size is 2.44 persons per household and the average family size is 3.19 persons per family.

In 2000, of the 4,341 households in NPU P, 40% had children under age 18 and 24% were single person households with 22% being single person households over 65. The average household size was 2.74 persons per household.

2010 Household Group Quarters Population - NPU P

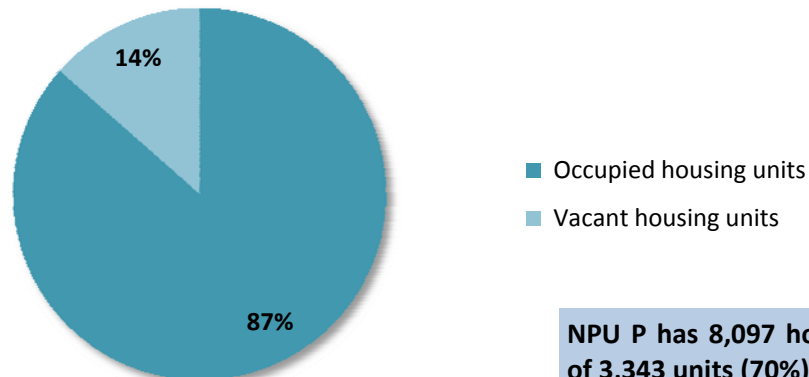


100% of the NPU P population lives in households.



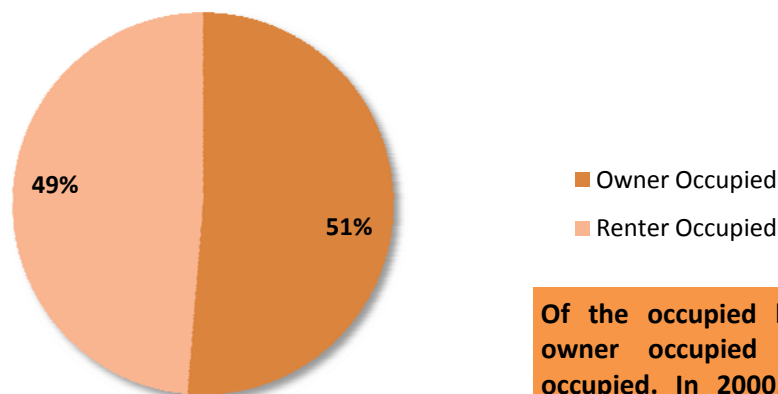
HOUSING

2010 Housing Occupancy - NPU P



NPU P has 8,097 housing units, an increase of 3,343 units (70%) from 4,754 in 2000. 86% are occupied and 14% are vacant. Rental units have 16% vacancy rate while owner occupied units have a 4% vacancy rate.

2010 Housing Tenure - NPU P



Of the occupied housing units, 51% are owner occupied and 49% are renter occupied. In 2000, 67% of housing units were owner occupied and 33% were renter occupied.

Renter occupied units have about the same household size (2.43) as owner occupied units (2.45).