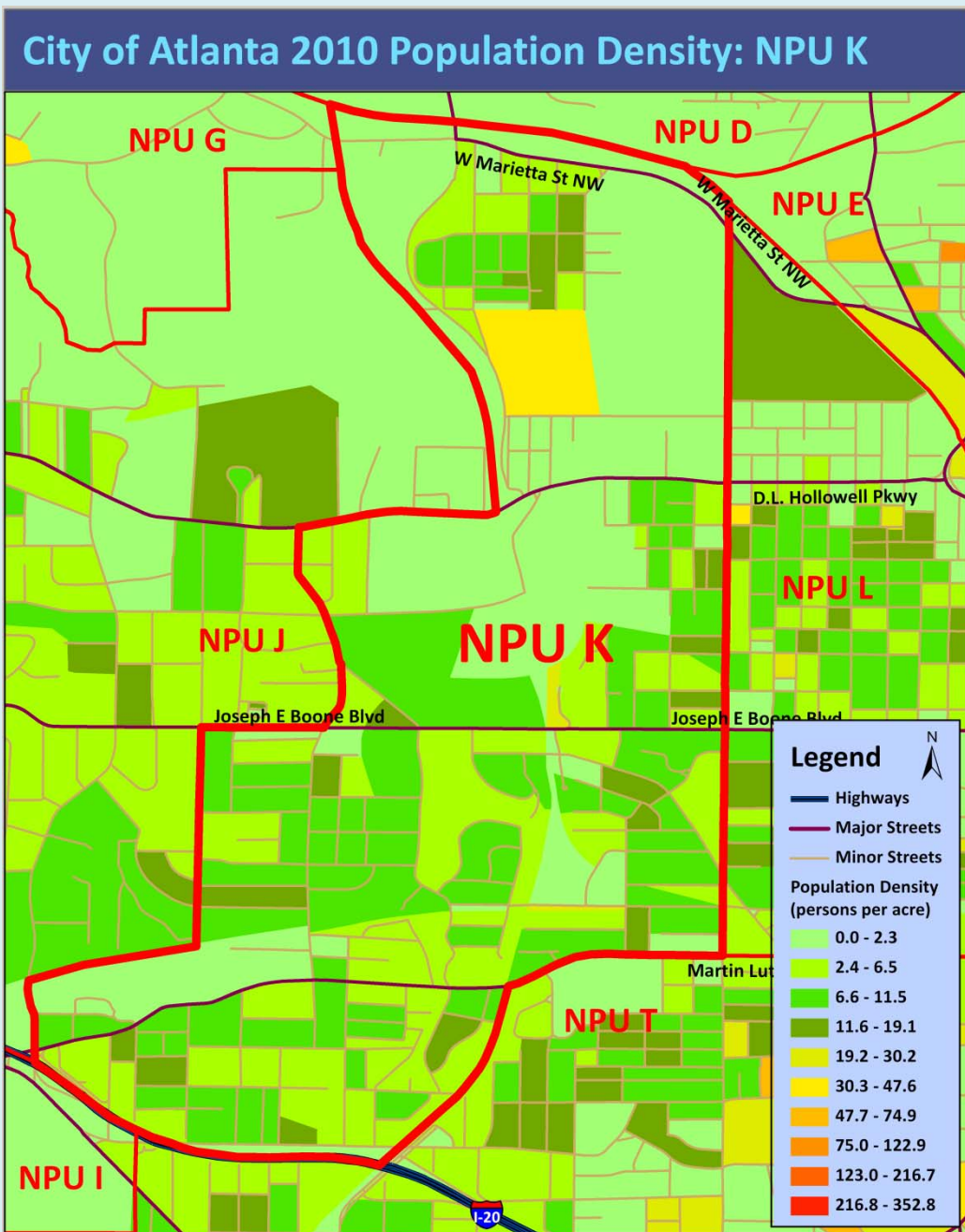


City of Atlanta

2010 Census Summary Report Neighborhood Planning Unit K



City of Atlanta Department of Planning and Community Development - Office of Planning- 404-330-6145- www.atlantaga.org

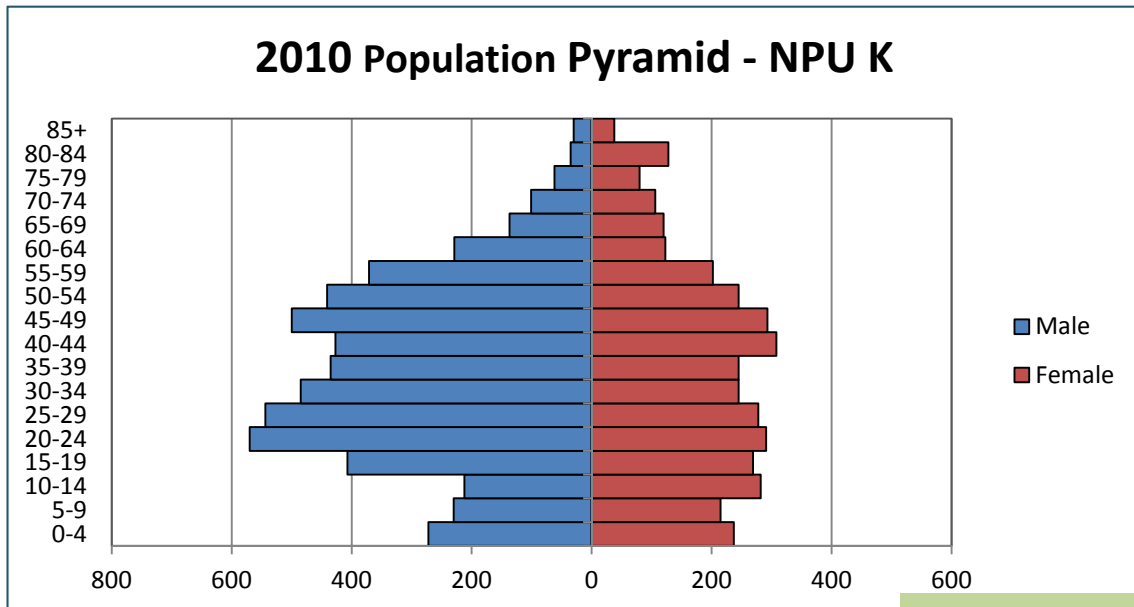
CITY OF ATLANTA – NPU K: 2010 POPULATION

According to the 2010 U.S. Census, the population of Neighborhood Planning Unit (NPU) K is 9,399, a decrease of 2,598 (-21.7%) from a 2000 population of 11,997. The Map shows the population density (persons per acre) of each Census Block in NPU K. NPU K had an overall density of 6.1 persons per acre.

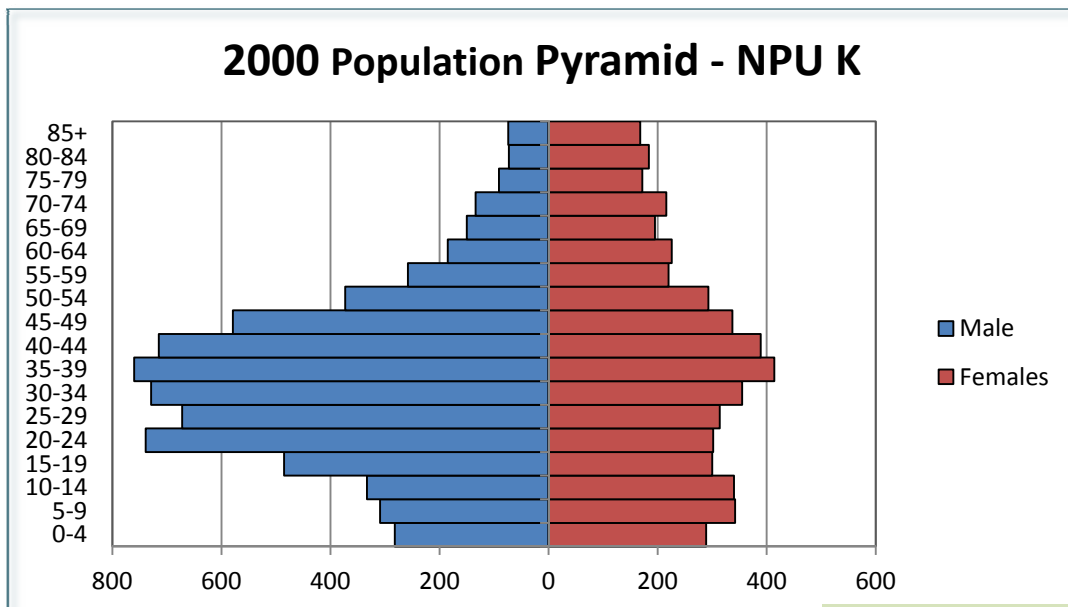
City of Atlanta 2010 Census Summary



AGE



The median age of the population is 36.2. Nineteen percent of the population is under 18, 10% of the population is over 65 and 33% of the population is between 20 and 39 years old.



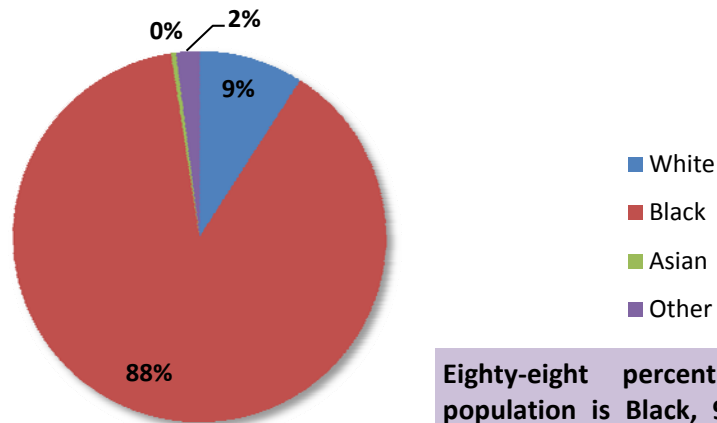
In 2000, NPU K had a median age of 35.9. Sixteen percent of the population was over 65 and 36% of the population was between 20 and 39 years old.



City of Atlanta 2010 Census Summary

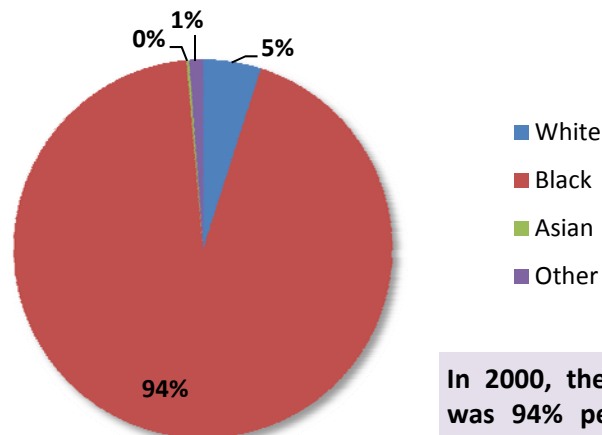
RACE

2010 Racial Composition - NPU K



Eighty-eight percent of the NPU K population is Black, 9% is White, 0.4% is Asian, 2% is other (Native American, Pacific Islander, other and two or more races). Two percent of the population is of Hispanic or Latin Origin.

2000 Racial Composition - NPU K



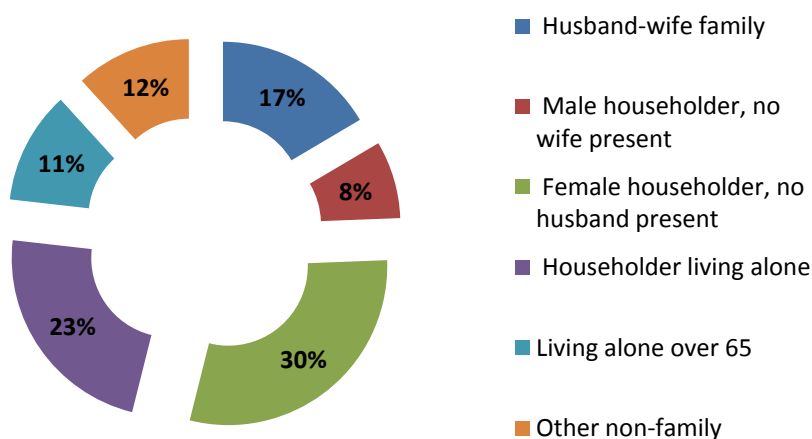
In 2000, the racial composition of NPU K was 94% percent Black, 5% White, 0.2% Asian and 1% Other (Native American, Pacific Islander, two or more races and Other). One percent of the population was of Hispanic or Latin Origin.

City of Atlanta 2010 Census Summary



HOUSEHOLDS

2010 Household Composition - NPU K



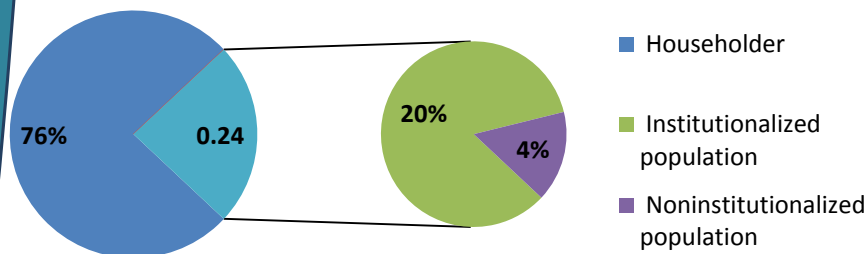
There are 7,151 NPU K residents in 2,814 households. Of these, 54% are family households and 46% are non-family households. Of all households, 27% have children under age 18 and 27% have an individual 65 years and older.

Thirty-four percent of households are single person households, with 11% being single person households over 65, 30% are female headed households and 17% are husband and wife households.

The average household size is 2.4 persons per household and the average family size is 3.3 persons per family.

In 2000, of the 3,597 households in NPU K, 31% had children under age 18 and 33% were single person households. The average household size was 2.5 persons per household.

Household and Group Quarter Population - NPU K

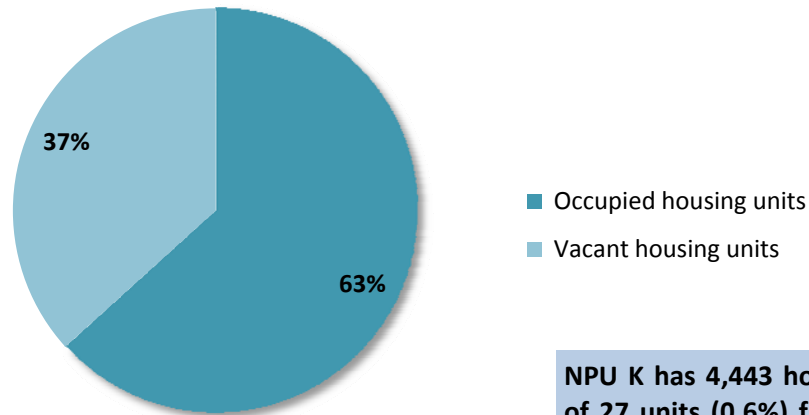


76% of the NPU K population lives in households and 24% lives in Group Quarters (2,248). Most of the Group Quarter population resides in institutionalized group quarters. The Fulton County jail is located in NPU K.



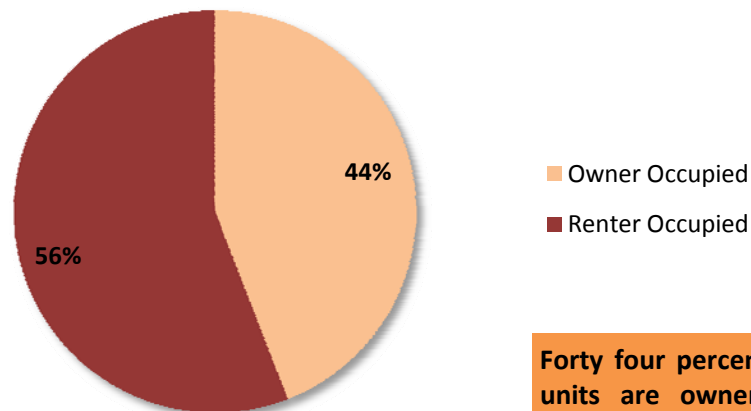
HOUSING

2010 Housing Occupancy - NPU K



NPU K has 4,443 housing units, an increase of 27 units (0.6%) from 4,416 in 2000. 63% are occupied and 37% are vacant. Rental units have 33% vacancy rate while owner occupied units have an 8% vacancy rate.

2010 Housing Tenure - NPU K



Forty four percent of the occupied housing units are owner occupied and 56% are renter occupied. In 2000, 47% of housing units were owner occupied.

Renter occupied units have a larger household size (2.76) than owner occupied units (2.27).