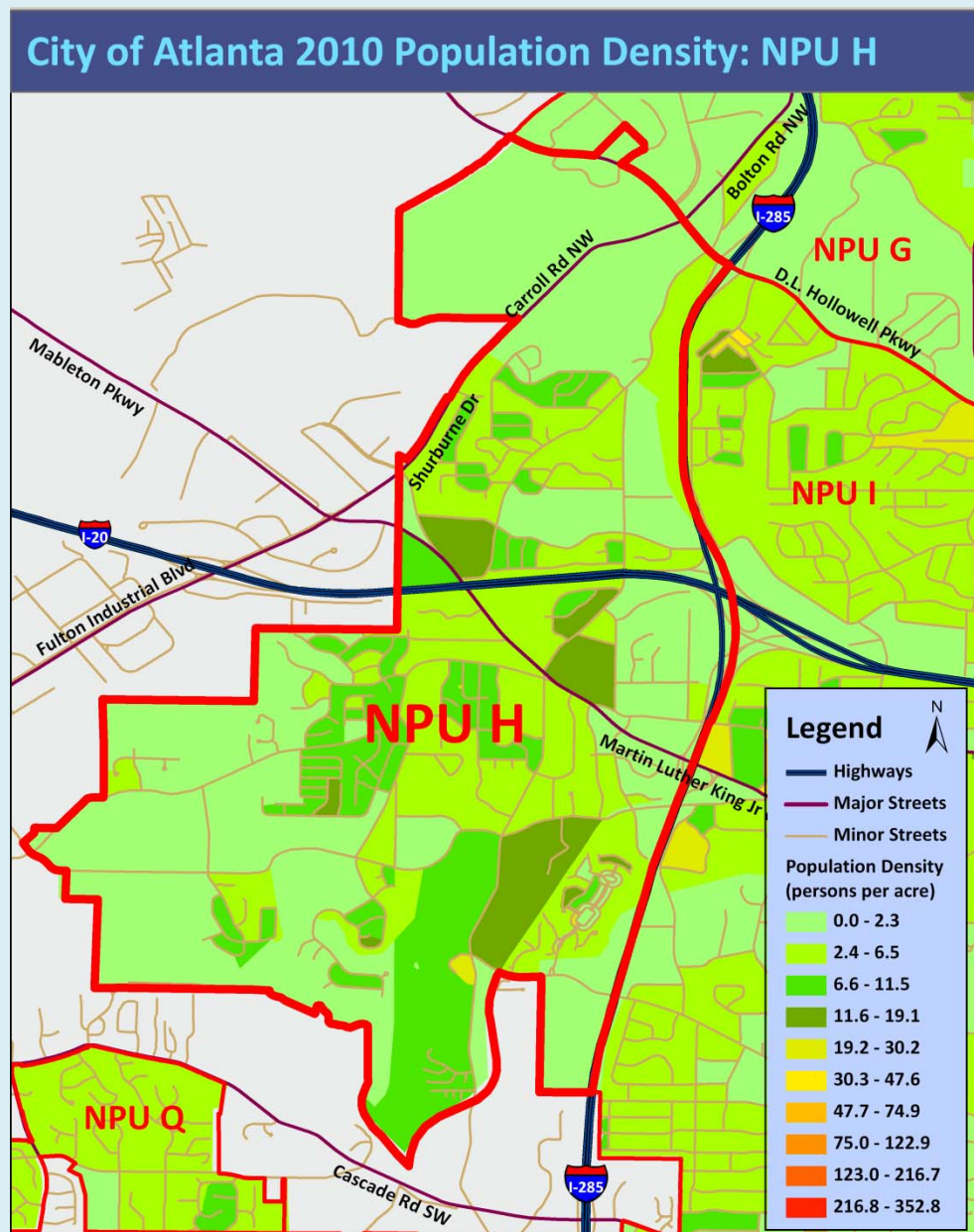


# City of Atlanta

## 2010 Census Summary Report Neighborhood Planning Unit H



City of Atlanta Department of Planning and Community Development – Office of Planning- 404-330-6145- [www.atlantaga.org](http://www.atlantaga.org)

### CITY OF ATLANTA – NPU H: 2010 POPULATION

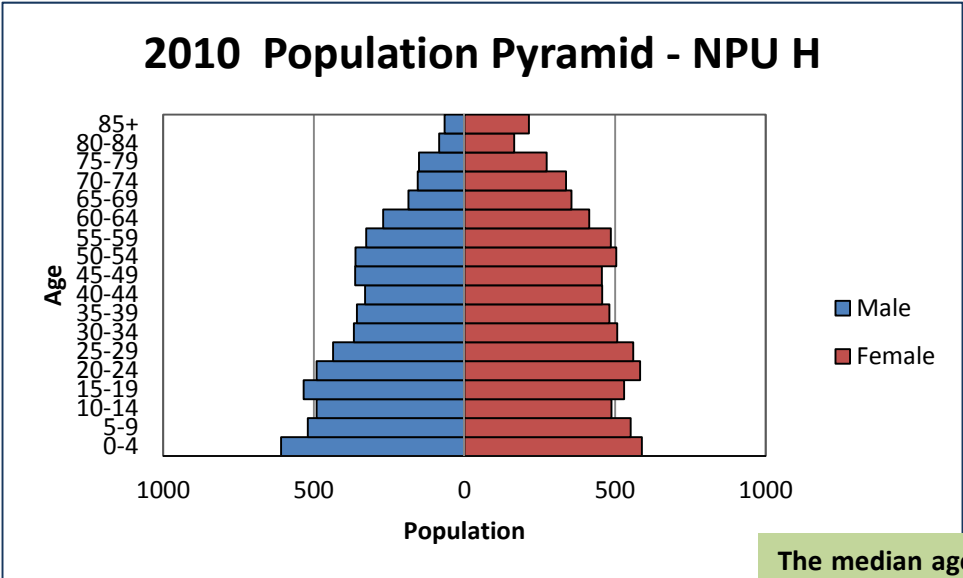
According to the 2010 U.S. Census, the population of Neighborhood Planning Unit (NPU) H is 14,049 a decrease of 3,225 (18.7%) from a 2000 population of 17,274.

The Map shows the population density (persons per acre) of each Census Block in NPU H. NPU H has an overall density of 3.5 persons per acre.

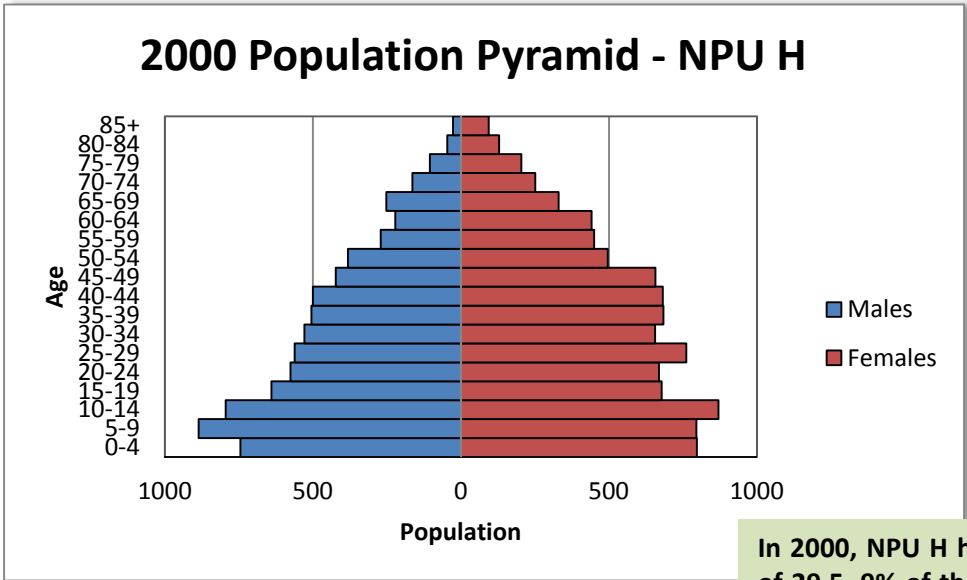
# City of Atlanta 2010 Census Summary



## AGE



The median age of the population is 33.7. 28% of the population is under 18, 14% of the population is over 65 and 27% of the population is between 20 and 39 years old.

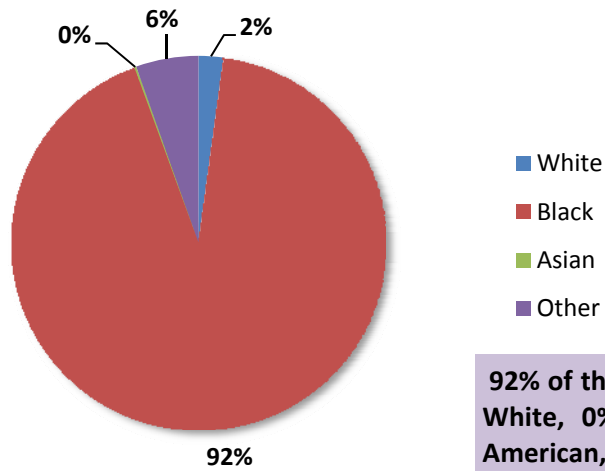


In 2000, NPU H had a median age of 29.5. 9% of the population was over 65, and 29% of the population was between 20 and 39 years old.



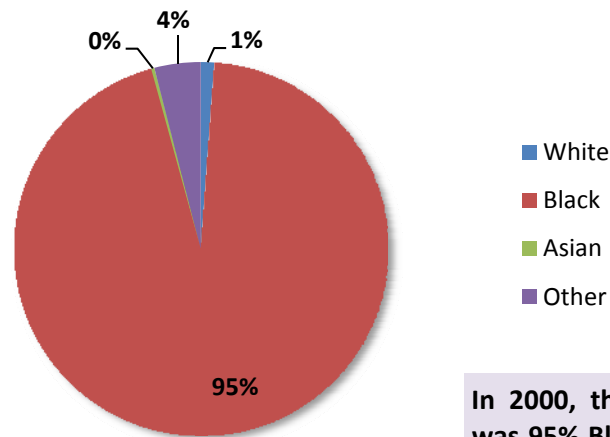
## RACE

### 2010 Racial Composition - NPU H



92% of the NPU H population is Black, 2% is White, 0% is Asian, 6% is other (Native American, Pacific Islander, two or more races and other). Four percent of the population is of Hispanic or Latin Origin.

### 2000 Racial Composition - NPU H



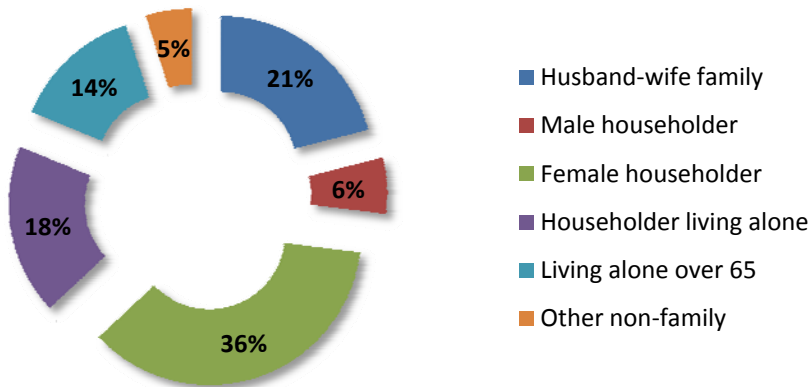
In 2000, the racial composition of NPU H was 95% Black, 1% White, 0% Asian and 4% Other (Native American, Pacific Islander, two or more races and other). Six percent of the population was of Hispanic or Latin Origin.

# City of Atlanta 2010 Census Summary



## HOUSEHOLDS

### 2010 Household Composition - NPU H



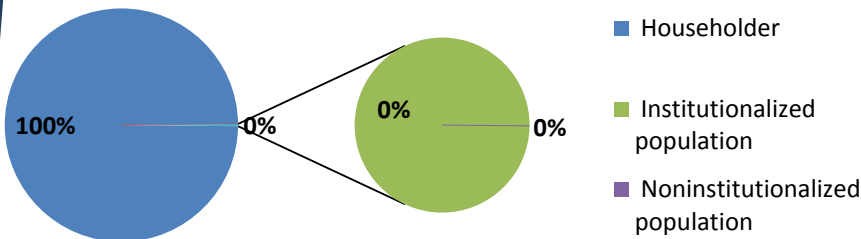
There are 14,049 NPU H residents in 5,340 households. Of these, 63% are family households and 37% are non-family households. Of all households, 35% have children under age 18 and 31% have an individual 65 years and older.

Single person households represent 32% of all households, with 14% being single person households over 65, 36% are female headed households and 21% are husband and wife households.

The average household size is 2.62 persons per household and the average family size is 3.31 persons per family.

In 2000, of the 5,991 households in NPU H, 46% had children under age 18 and 23% were single person households. The average household size was 2.87 persons per household.

### 2010 Household and Group Quarter Population - NPU H

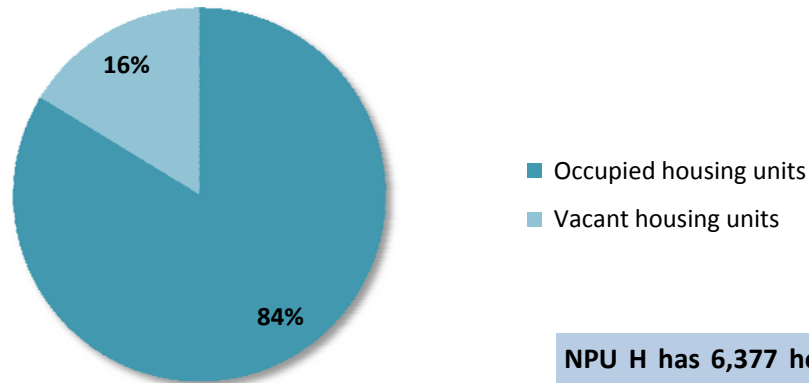


100% of the NPU H population lives in households and 0% lives in Group Quarters.



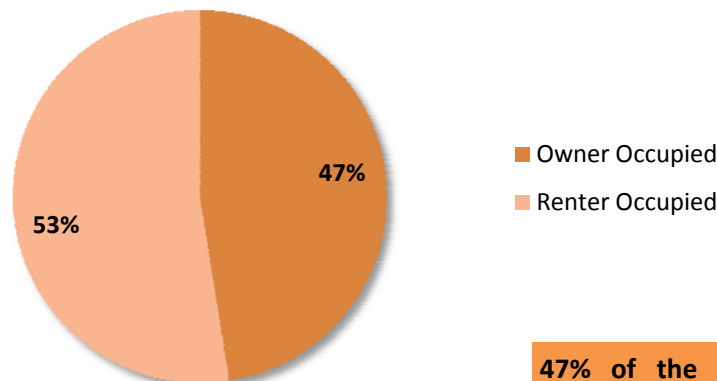
## HOUSING

### 2010 Housing Occupancy: NPU H



NPU H has 6,377 housing units, a decrease of 4 units (0.06%) from 6,381 in 2000. 84% of all housing units are occupied and 16% are vacant. Rental units have 15% vacancy rate while owner occupied units have a 4% vacancy rate.

### 2010 Housing Tenure: NPU H



47% of the occupied housing units are owner occupied and 53% are renter occupied. In 2000, 46% of housing units were owner occupied while 54% were owner occupied.

Renter occupied units have 2.82 persons per households and owner occupied units have 2.41 persons per households.