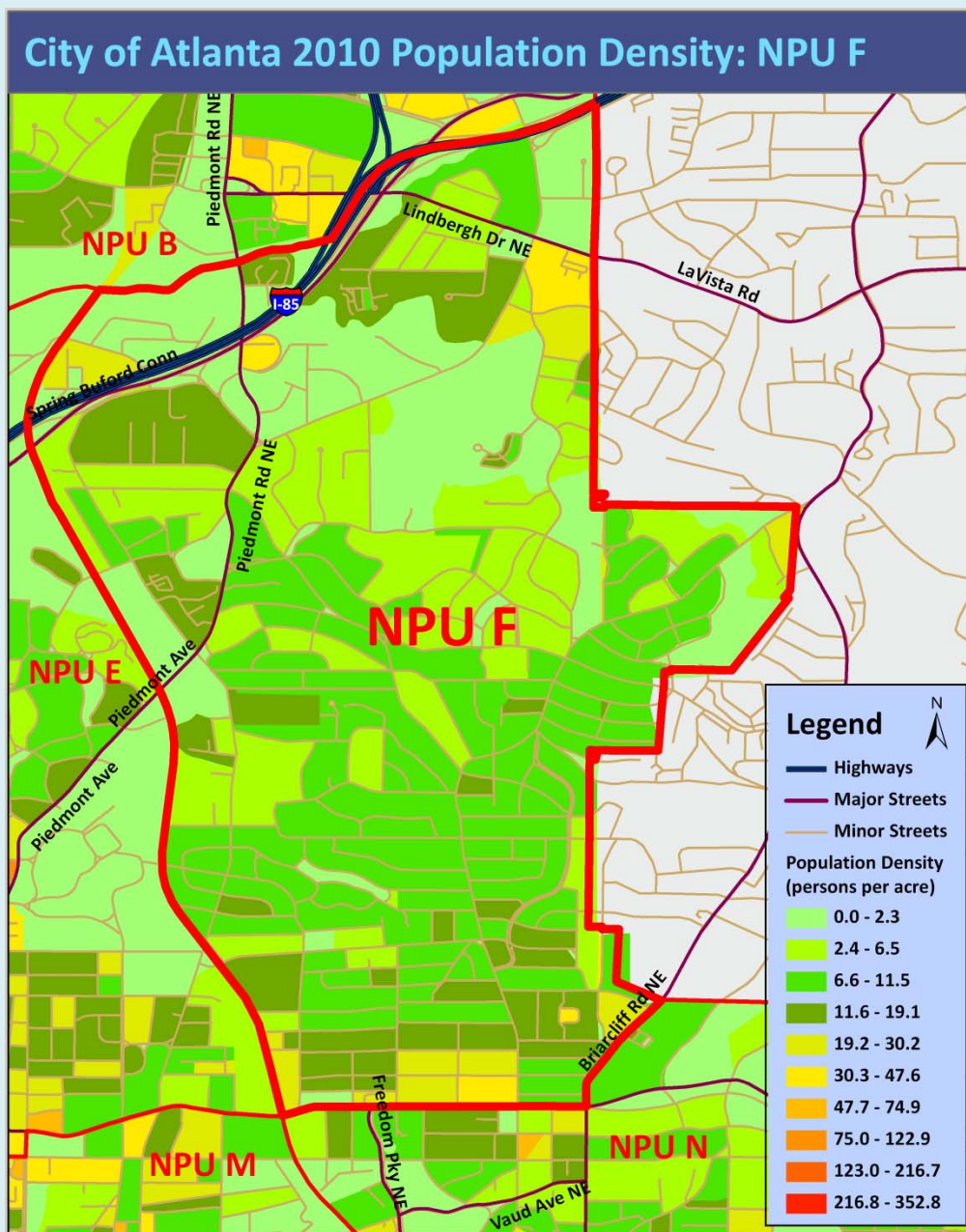


City of Atlanta

2010 Census Summary Report Neighborhood Planning Unit F



City of Atlanta Department of Planning and Community Development – Office of Planning- 404-330-6145- www.atlantaga.org

CITY OF ATLANTA – NPU F: 2010 POPULATION

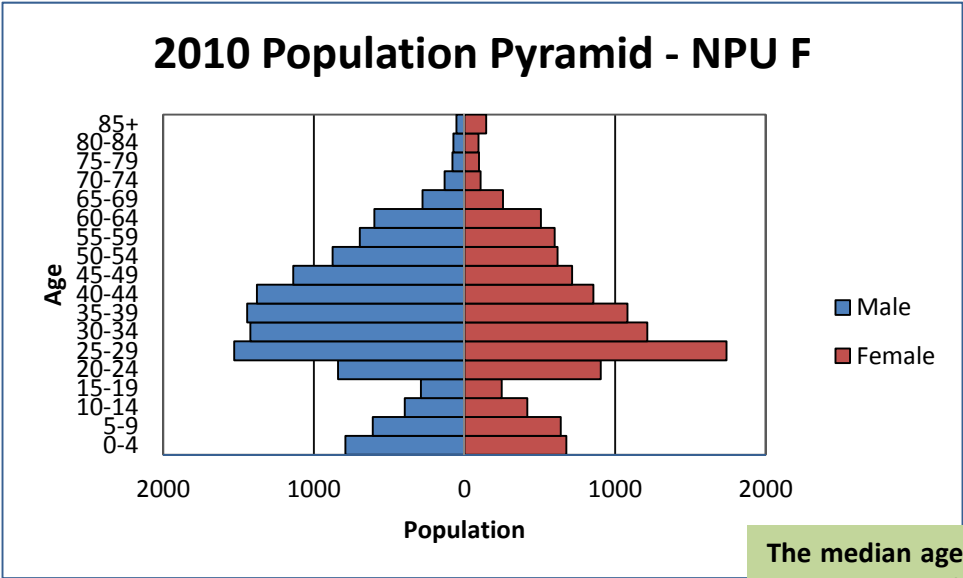
According to the 2010 U.S. Census, the population of Neighborhood Planning Unit (NPU) F is 23,641, an increase of 2,751 (13%) from a 2000 population of 20,890.

The Map shows the population density (persons per acre) of each Census Block in NPU F. NPU F has an overall density of 7.8 persons per acre.

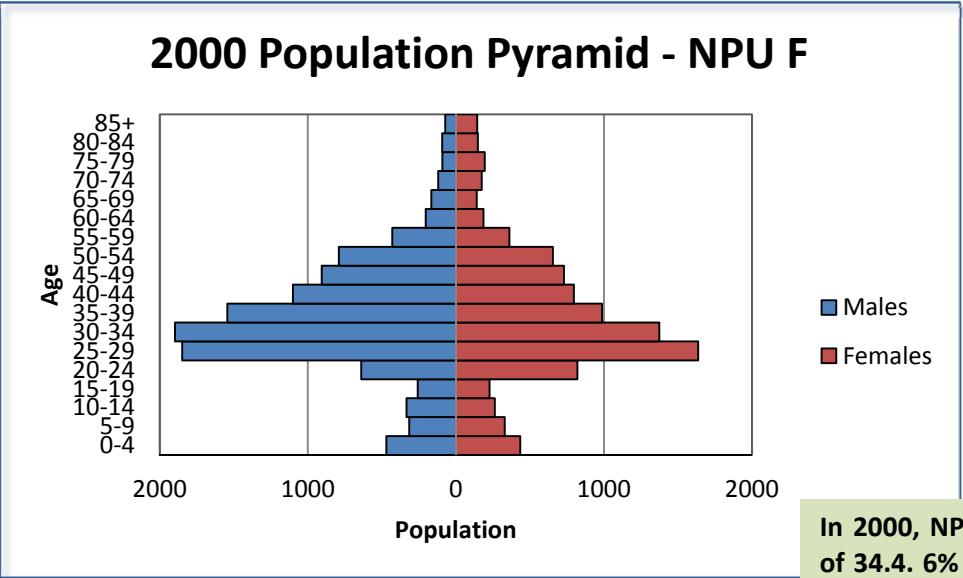
City of Atlanta 2010 Census Summary



AGE



The median age of the population is 35.1. 17% of the population is under 18, 6% of the population is over 65 and 43% of the population is between 20 and 39 years old.



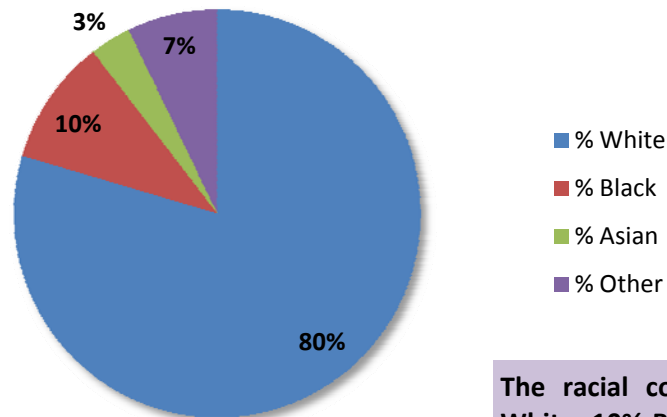
In 2000, NPU F had a median age of 34.4. 6% of the population was over 65, and 51% of the population was between 20 and 39 years old.



Race

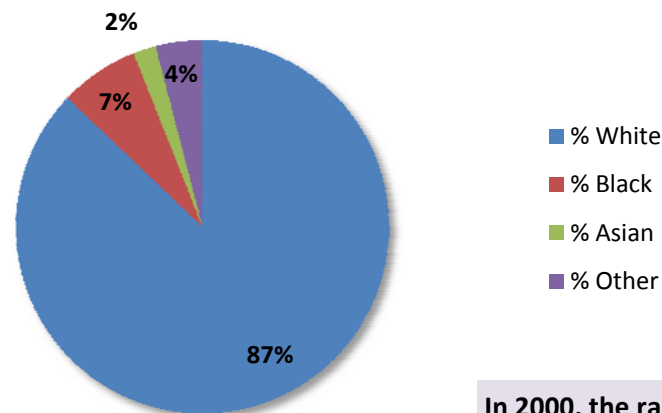
AGE

2010 Racial Composition - NPU F



The racial composition of NPU F is 80% White, 10% Black, 3% Asian, and 7% Other (Native American, Pacific Islander, other and two or more races). 10% of the population is of Hispanic or Latin Origin.

2000 Racial Composition - NPU F



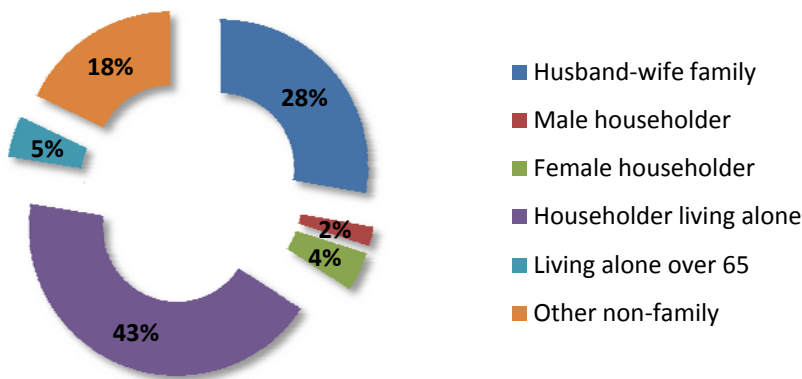
In 2000, the racial composition of NPU F was 87% White, 7% Black, 2% Asian and 4% Other (Native American, Pacific Islander, two or more races and other). 6% of the population was of Hispanic or Latin Origin.



City of Atlanta 2010 Census Summary

HOUSEHOLDS

2010 Household Composition - NPU F



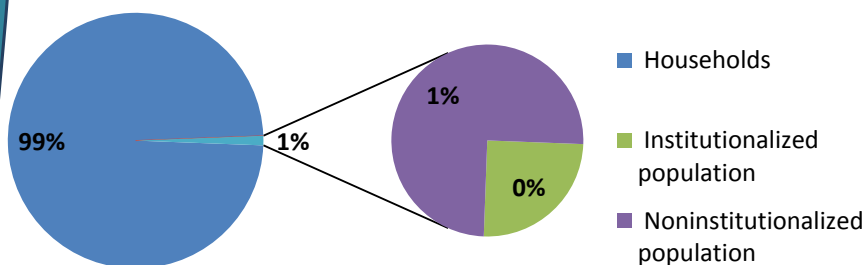
There are 23,245 NPU F residents in 12,181 households. Of these, 34% are family households and 66% are non-family households. Of all households, 18% have children under age 18 and 8% have an individual 65 years and older.

48% of households are single person households, with 5% being single person households over 65, 4% are female headed households and 28% are husband and wife households.

The average household size is 1.91 persons per household and the average family size is 2.95 persons per family.

In 2000, of the 11,355 households in NPU F, 13% had children under age 18 and 47.5% were single person households. The average household size was 1.82 persons per household.

2010 Households and Group Quarter Population - NPU F

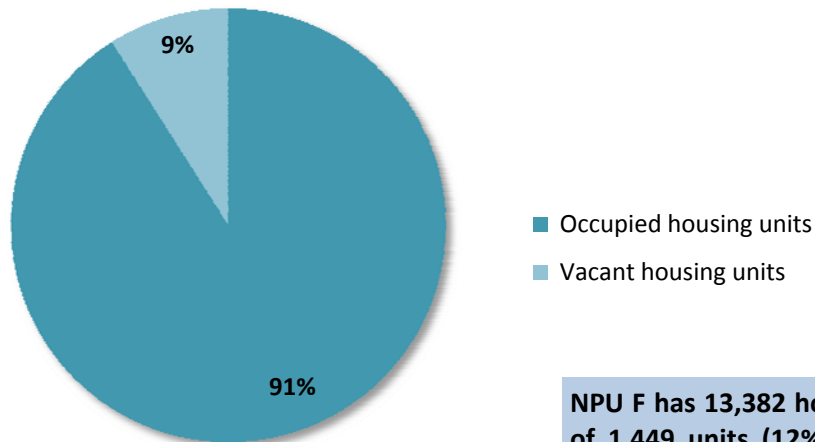


99% of the NPU F population lives in households and 1% (285) lives in Group Quarters.



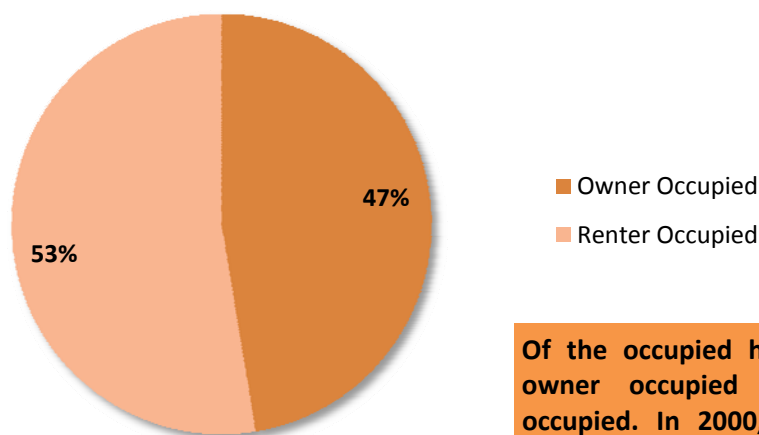
HOUSING

2010 Housing Occupancy - NPU F



NPU F has 13,382 housing units, an increase of 1,449 units (12%) from 11,933 in 2000. 91% of all housing units are occupied and 9% are vacant. Rental units have 10% vacancy rate while owner occupied units have a 3% vacancy rate.

2010 Housing Tenure - NPU F



Of the occupied housing units, 47% are owner occupied and 53% are renter occupied. In 2000, 48% of housing units were owner occupied and 52% were renter occupied.

Renter occupied units have 1.66 persons per households while owner occupied units have 2.18 persons per households.