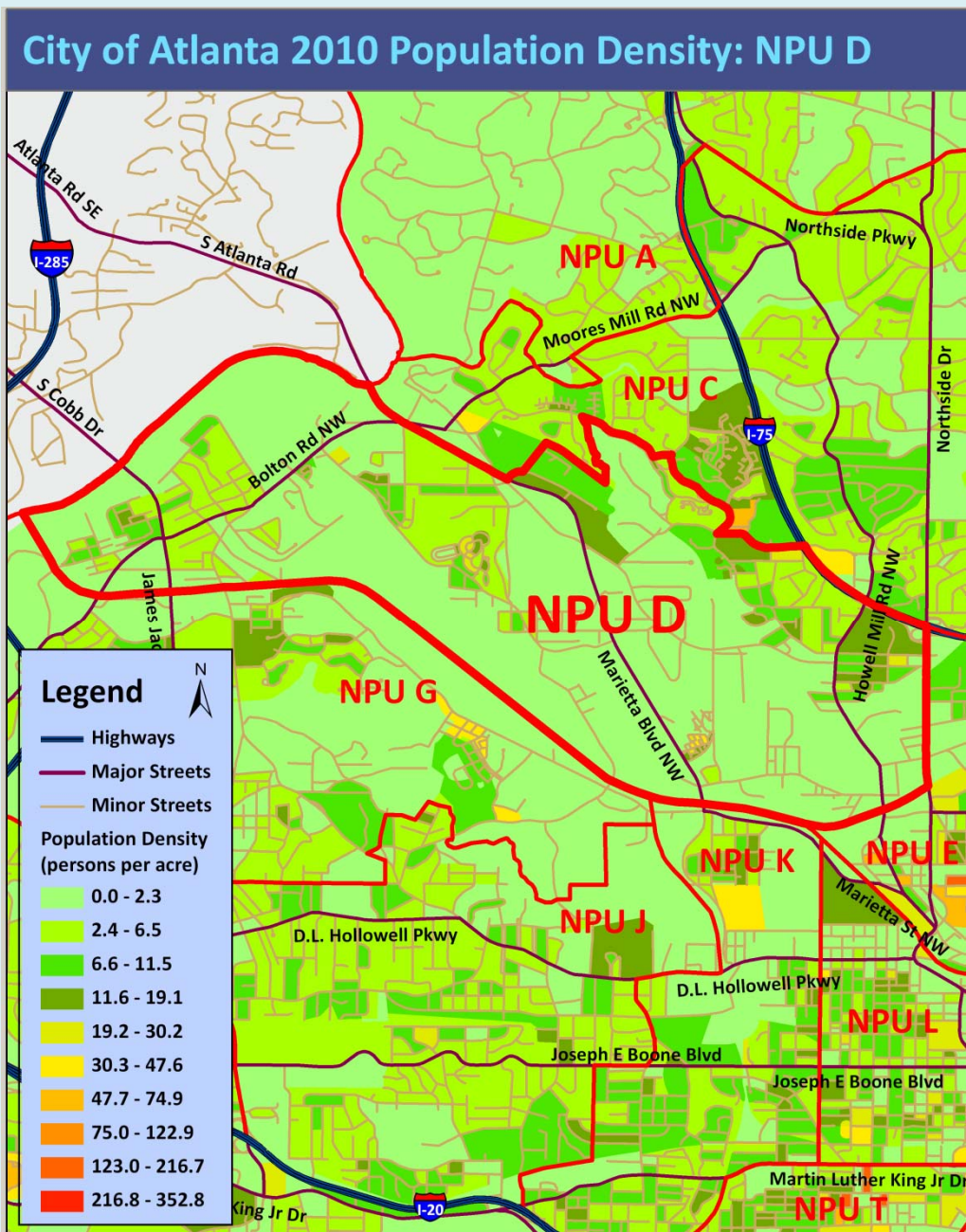


City of Atlanta

2010 Census Summary Report Neighborhood Planning Unit D



City of Atlanta Department of Planning and Community Development - Office of Planning - 404-330-6145 - www.atlantaga.org

CITY OF ATLANTA – NPU D: 2010 POPULATION

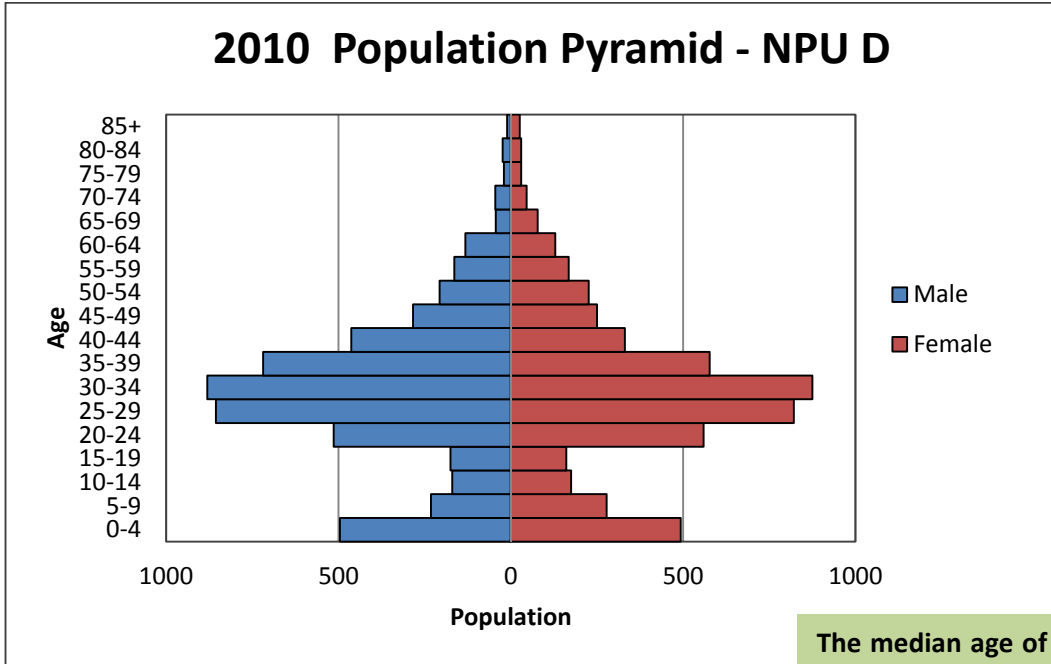
According to the 2010 U.S. Census, the population of Neighborhood Planning Unit (NPU) D is 10,690, an increase of 2,000 (23%) from a 2000 population of 8,690.

The Map shows the population density (persons per acre) of each Census Block in NPU D. NPU D has an overall density of 2.6 persons per acre.

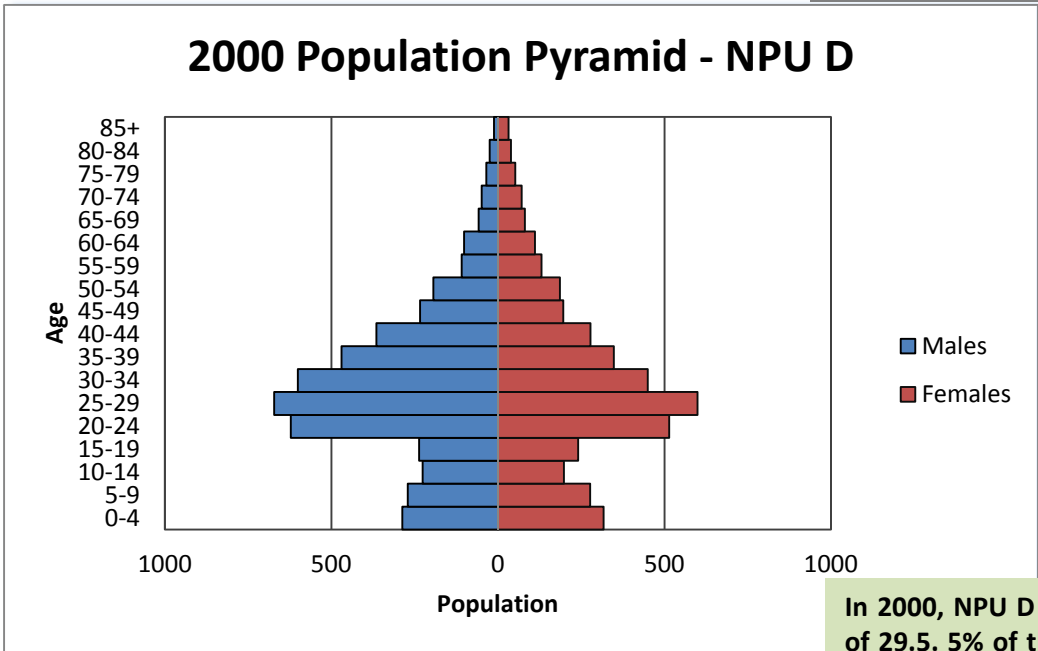
City of Atlanta 2010 Census Summary



AGE



The median age of the population is 31.2. 19% of the population is under 18, 3.3% of the population is over 65 and 54.2% of the population is between 20 and 39 years old.



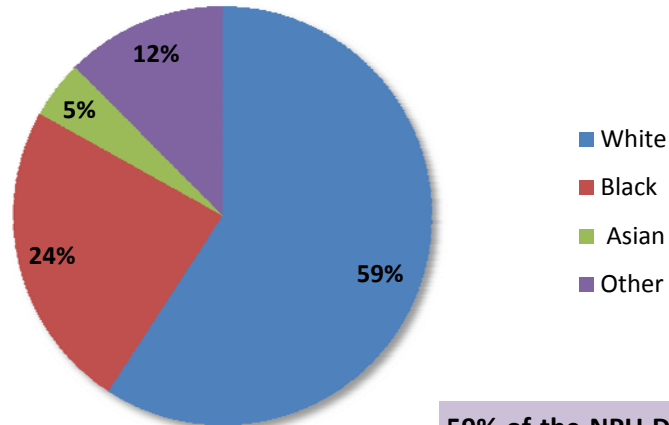
In 2000, NPU D had a median age of 29.5. 5% of the population was over 65, and 49% of the population was between 20 and 39 years old.

City of Atlanta 2010 Census Summary



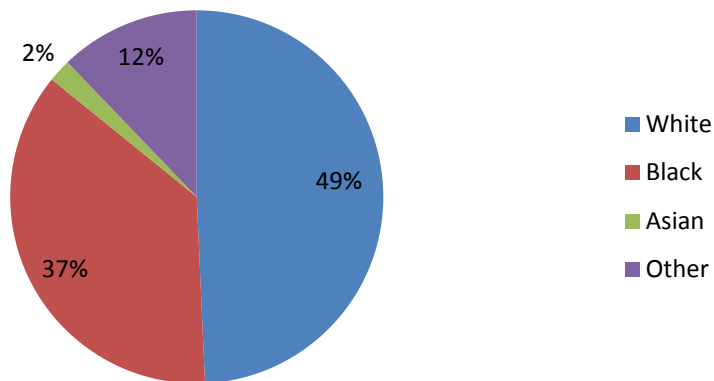
RACE

2010 Racial Composition - NPU D



59% of the NPU D population is White, 24% is Black, 5% is Asian, and 12% is other (Native American, Pacific Islander, other race and two or more races). 16% of the population is of Hispanic or Latin Origin.

2000 Racial Composition - NPU D

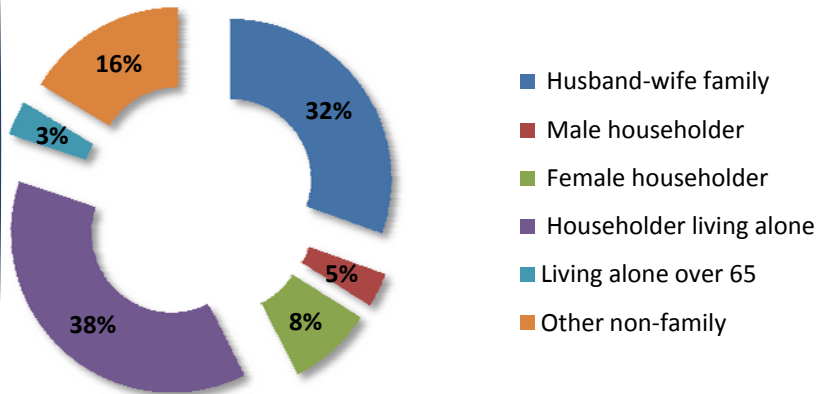


In 2000, the racial composition of NPU D was 49% White, 37% Black, 2% Asian and 12% Other (Native American, Pacific Islander, two or more races and other race). 19% of the population was of Hispanic or Latin Origin.



HOUSEHOLDS

2010 Household Composition - NPU D



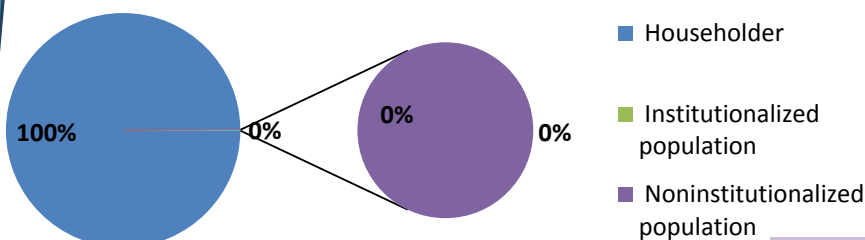
There are 10,690 NPU D residents in 5,040 households. Of these, 42% are family households and 58% are non-family households. Of all households, 22% have children under age 18 and 6% have an individual 65 years and older.

Single person households make up 41% of all households. 3% of households are single person households over 65, 8% are female headed households and 30% are husband and wife households.

The average household size is 2.12 persons per household and the average family size is 2.99 persons per family.

In 2000, of the 3,697 households in NPU D, 25% had children under age 18 and 38% were single person households. The average household size was 2.32 persons per household.

2010 Household and Group Population - NPU D

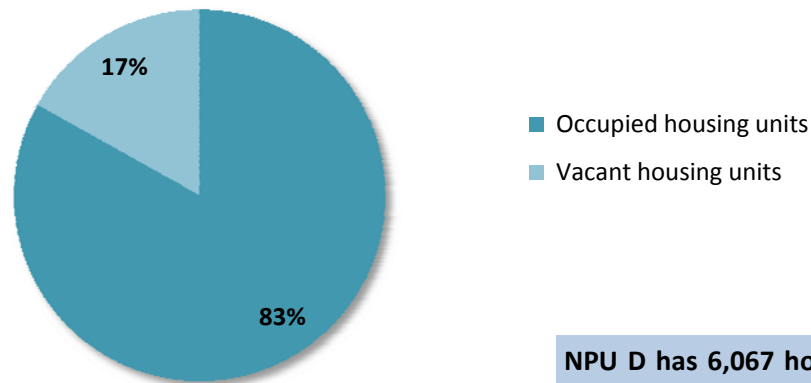


100% of the NPU D population lives in households and very few (9) live in Group Quarters.



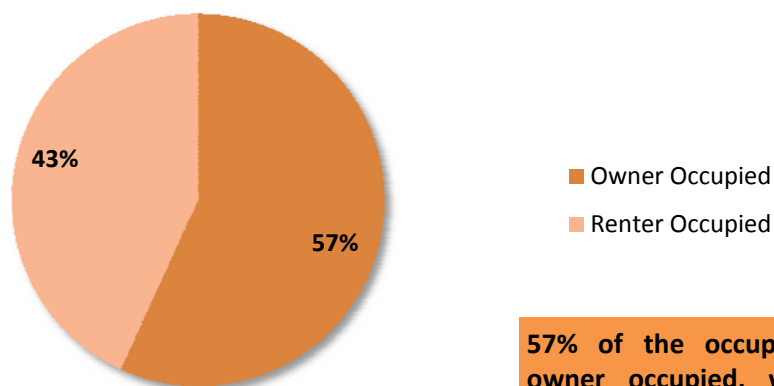
HOUSING

2010 Housing Occupancy - NPU D



NPU D has 6,067 housing units, an increase of 2,039 units (51%) from 4,028 in 2000. Eighty three percent are occupied and 17% are vacant. Rental units have 23% vacancy rate while owner occupied units have a 6% vacancy rate.

2010 Housing Tenure - NPU D



57% of the occupied housing units are owner occupied, while 43% are renter occupied. In 2000, 38% of housing units were owner occupied and 62% were renter occupied.

Renter occupied units have a slightly smaller household size (2.11) than owner occupied units (2.13).