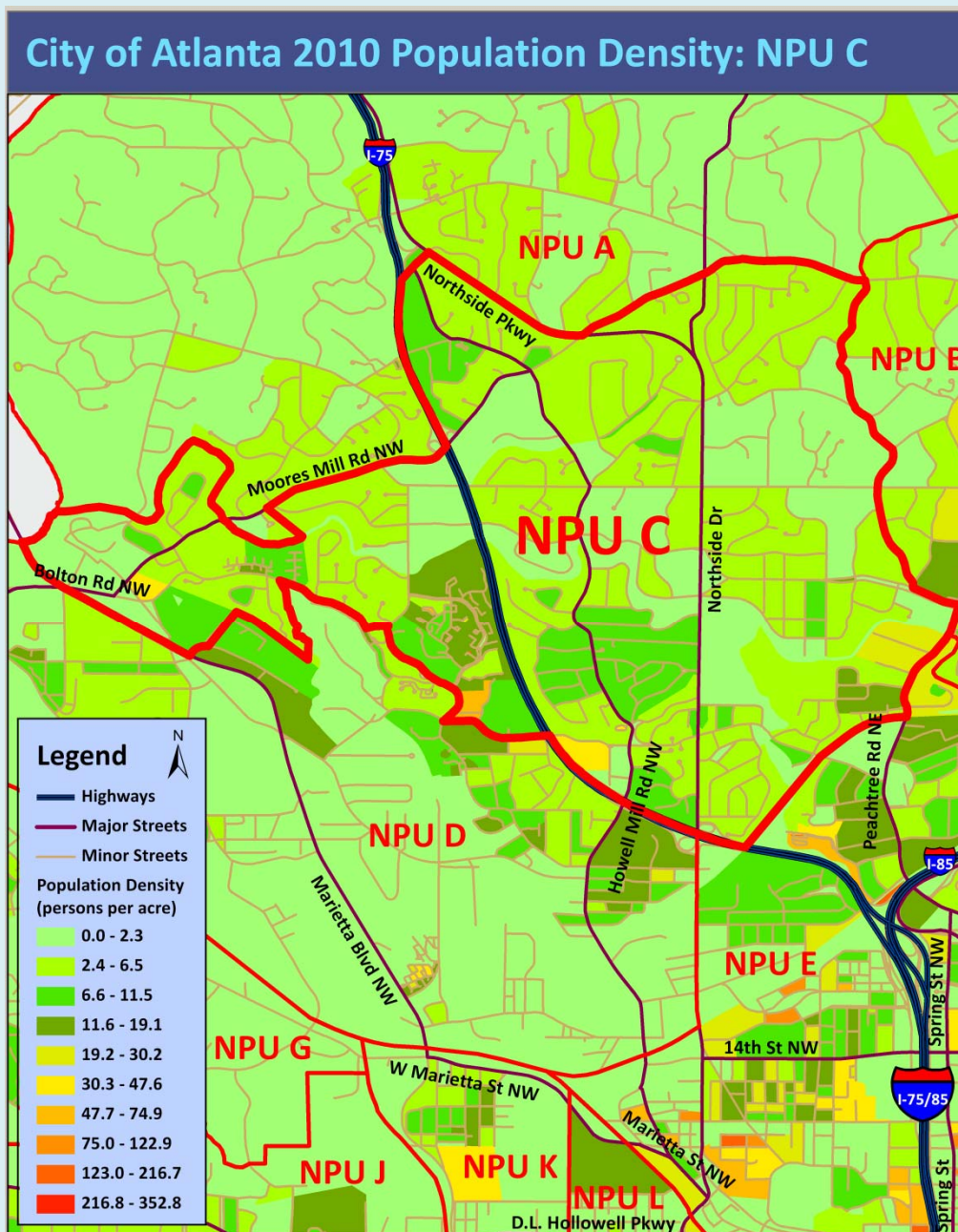


# City of Atlanta

## 2010 Census Summary Report Neighborhood Planning Unit C



City of Atlanta Department of Planning and Community Development – Office of Planning- 404-330-6145- [www.atlantaga.org](http://www.atlantaga.org)

### CITY OF ATLANTA – NPU C: 2010 POPULATION

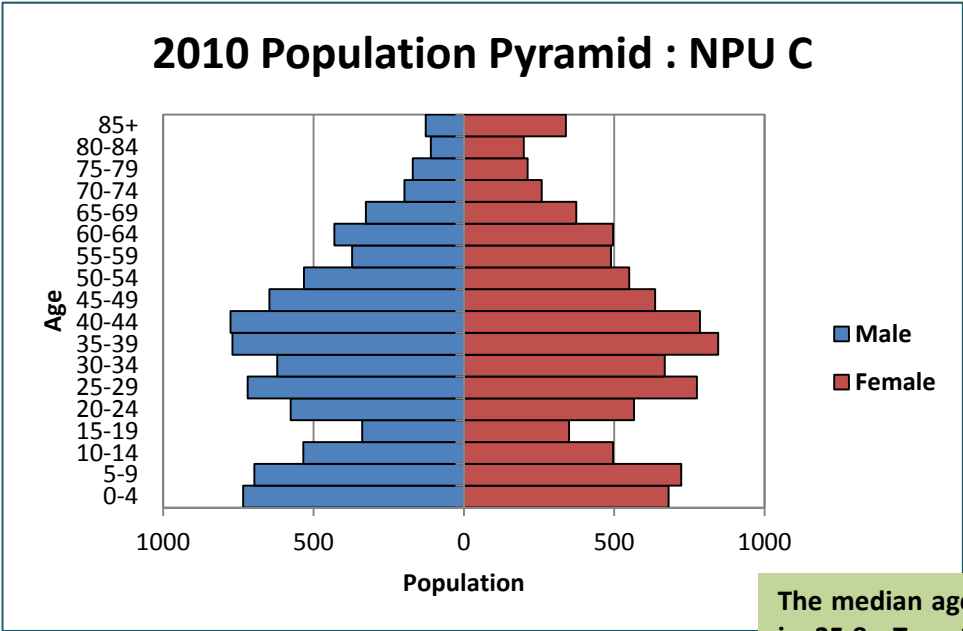
According to the 2010 U.S. Census, the population of Neighborhood Planning Unit (NPU) C is 18,122, an increase of 1,923 (11.9%) from a 2000 population of 16,199.

The Map shows the population density (persons per acre) of each Census Block in NPU C. NPU C has an overall density of 4.7 persons per acre.

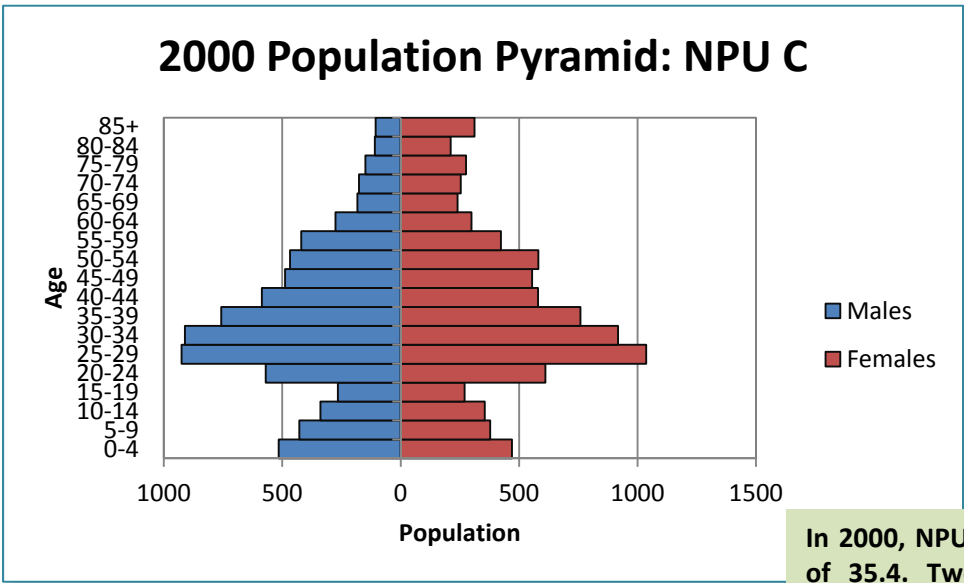
# City of Atlanta 2010 Census Summary



## AGE



The median age of the population is 35.8. Twenty-four percent of the population is under 18, 13% of the population is over 65 and 30% of the population is between 20 and 39 years old.



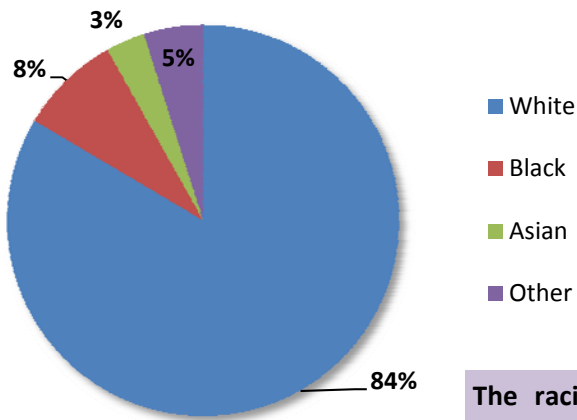
In 2000, NPU C had a median age of 35.4. Twelve percent of the population was over 65 and 40% of the population was between 20 and 39 years old.

# City of Atlanta 2010 Census Summary



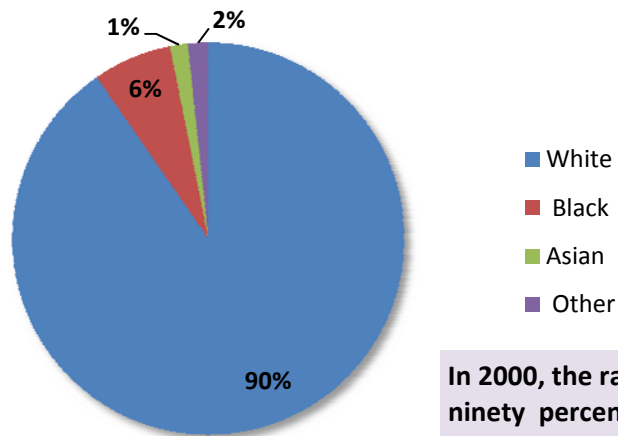
## RACE

### 2010 Racial Composition - NPU C



The racial composition of NPU C is 84% White, 8% Black, 3% Asian, and 5% Other (Native American, Pacific Islander, other and two or more races). Six percent of the population is of Hispanic or Latin Origin.

### 2000 Racial Composition - NPU C



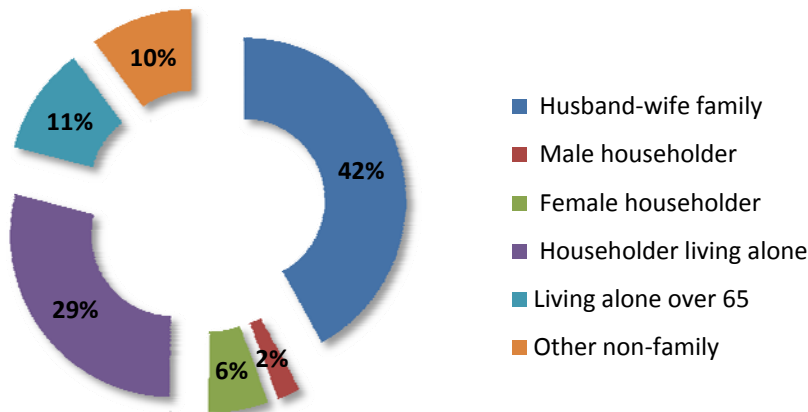
In 2000, the racial composition of NPU C was ninety percent White, 6% Black, 1% Asian and 2% Other (Native American, Pacific Islander, two or more races and Other). Two percent of the population was of Hispanic or Latin Origin.

# City of Atlanta 2010 Census Summary



## HOUSEHOLDS

### 2010 Household Composition - NPU C



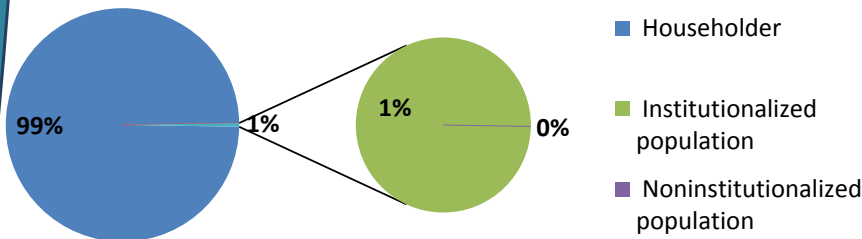
There are 18,032 NPU C residents in 8,211 households. Of these, 50% are family households and 50% are non-family households. Of all households, 27.5% have children under age 18 and 21% have an individual 65 years and older.

Forty percent of households are single person households. 11% of households are single person households over 65, 6% are female headed households and 42% are husband and wife households.

The average household size is 2.2 persons per household and the average family size is 3.08 persons per family.

In 2000, of the 7,933 households in NPU C, 19.5% had children under age 18 and 41% were single person. The average household size was 2.02 persons per household.

### Household and Group Quarter Population - NPU C

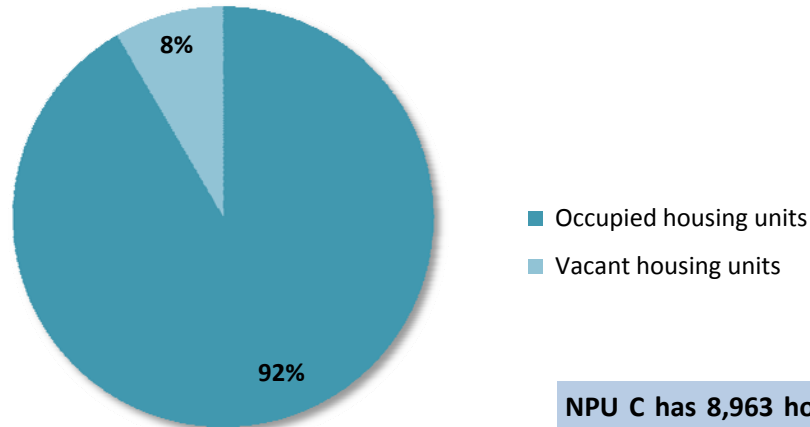


99% of the NPU C population lives in households and 1% lives in Group Quarters.



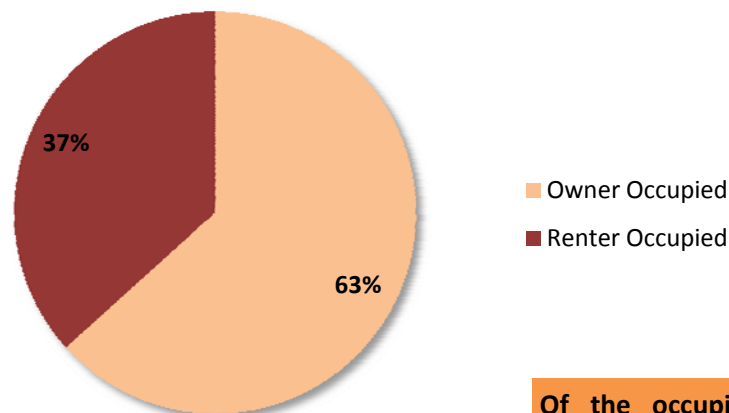
## HOUSING

### 2010 Housing Occupancy - NPU C



NPU C has 8,963 housing units, an increase of 513 units (6%) from 8,450 in 2000. 92% are occupied and 8% are vacant. Rental units have 10% vacancy rate while owner occupied units have a 3% vacancy rate.

### 2010 Housing Tenure - NPU C



Of the occupied units, 63% are owner occupied and 37% are renter occupied. In 2000, 65% of housing units were owner occupied and 35% were renter occupied.

Renter occupied units have a smaller household size (1.8) than owner occupied units (2.4).