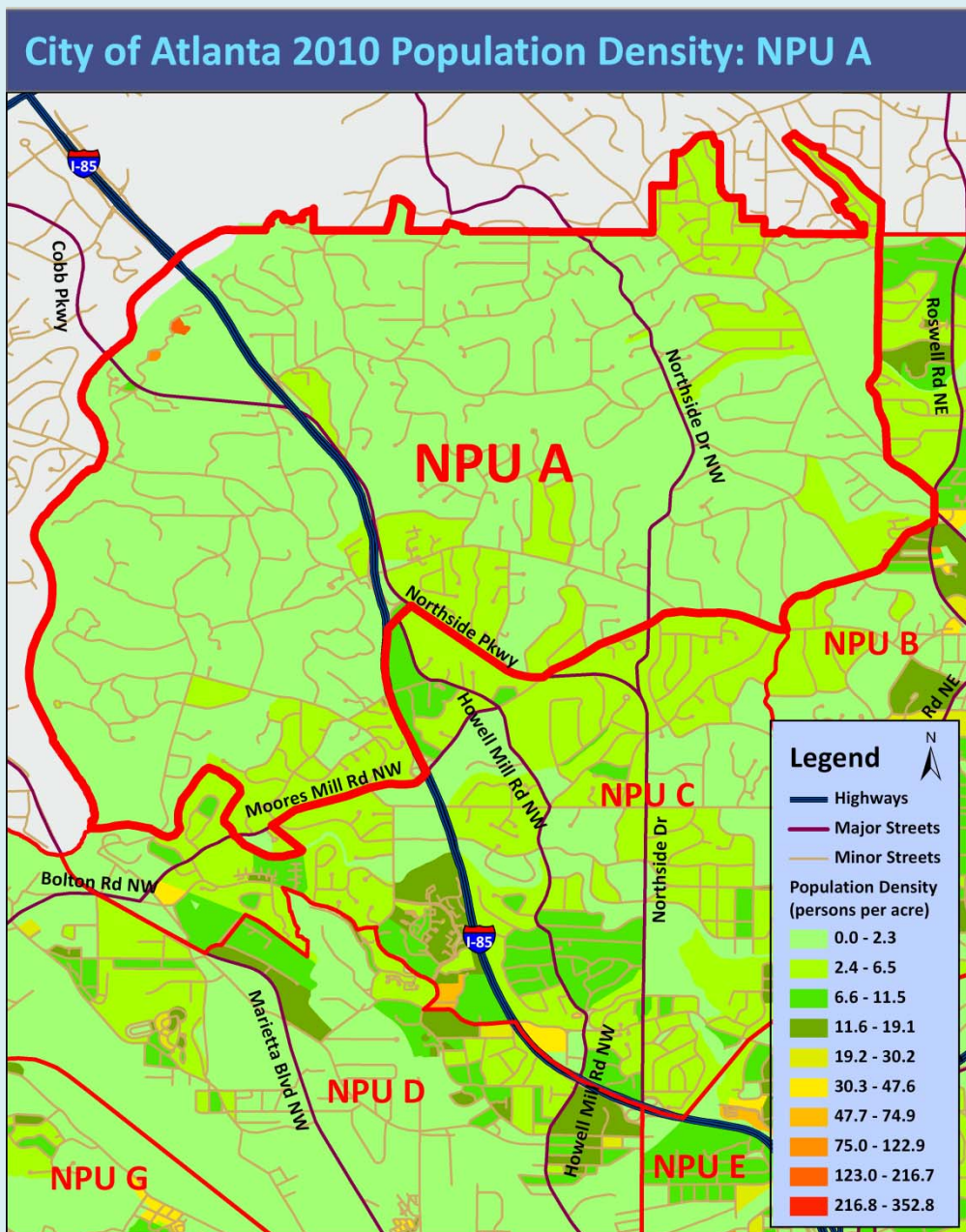


City of Atlanta

2010 Census Summary Report Neighborhood Planning Unit A



City of Atlanta Department of Planning and Community Development – Office of Planning- 404-330-6145- www.atlantaga.org

CITY OF ATLANTA – NPU A: 2010 POPULATION

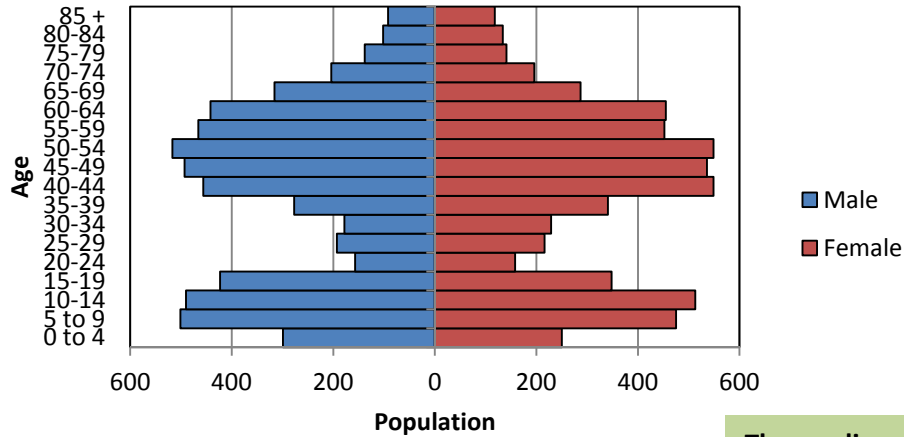
According to the 2010 U.S. Census, the population of Neighborhood Planning Unit (NPU) A is 11,691, an increase of 391 (3.4%) from a 2000 population of 11,300.

The Map shows the population density (persons per acre) of each Census Block in NPU A. NPU A has an overall density of 1.6 persons per acre.



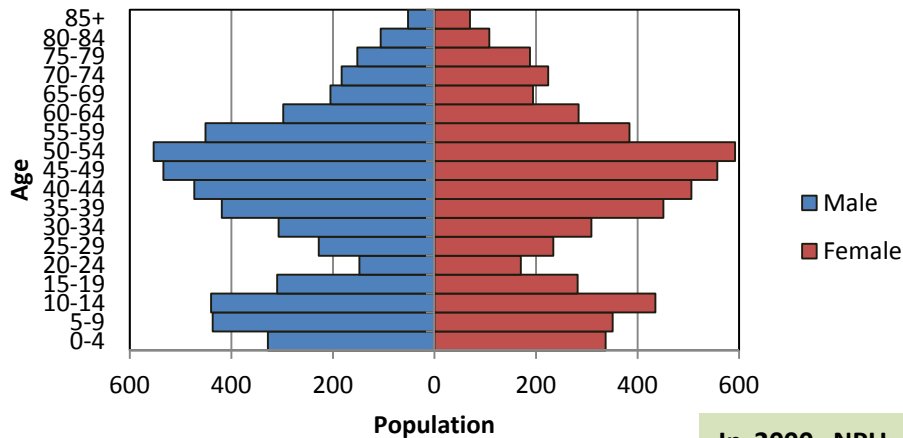
AGE

2010 Population Pyramid - NPU A



The median age of the population is 44. Twenty-six percent of the population is under 18, 15% of the population is over 65 and 15% of the population is between 20 and 39 years old.

2000 Population Pyramid - NPU A

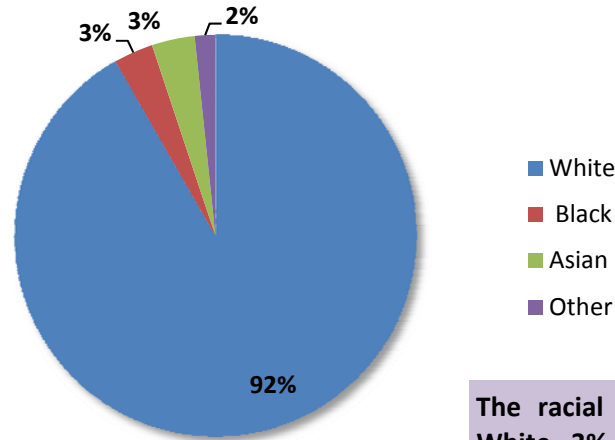


In 2000, NPU A had a population of 11,300 and a median age of 42.4. Thirteen percent of the population was over 65 and 20% of the population was between 20 and 39 years old.



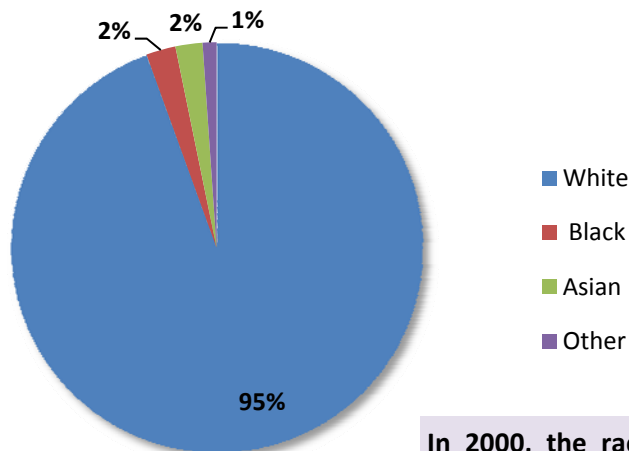
RACE

2010 Racial Composition - NPU A



The racial composition of NPU A is 92% White, 3% Black, 3% Asian, and 2% Other (Native American, Pacific Islander, other and two or more races). Two percent of the population is of Hispanic or Latin Origin.

2000 Racial Composition - NPU A



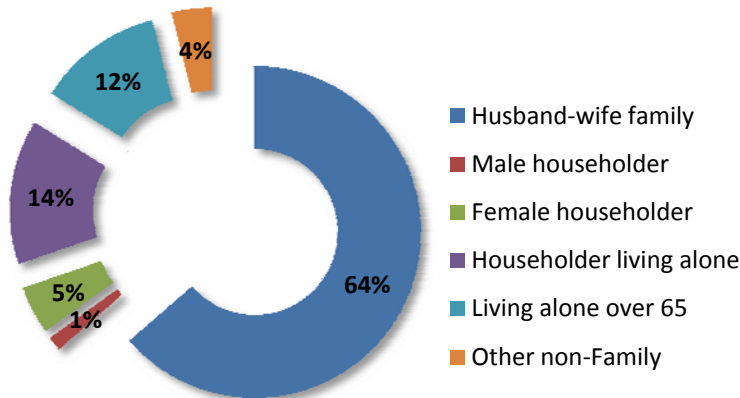
In 2000, the racial composition of NPU A was 95% White, 2% Black, 2% Asian and 1% Other (Native American, Pacific Islander, two or more races and Other). One percent of the population was of Hispanic or Latin Origin.

City of Atlanta 2010 Census Summary



HOUSEHOLDS

2010 Household Composition - NPU A



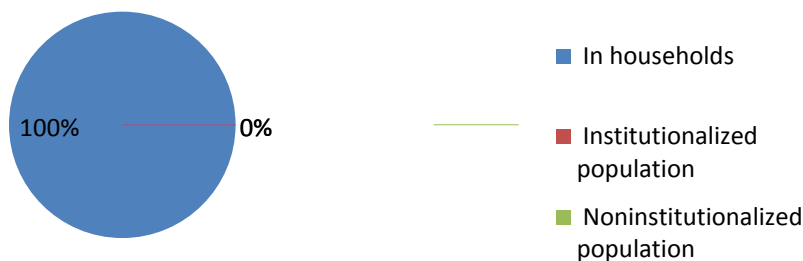
There are 11,691 NPU A residents in 4,656 households. Of these, 70% are family households and 30% are non-family households. Of all households, 33% have children under age 18 and 26% have an individual 65 years and older.

Twenty-six percent of households are single person households, with 12% being single person households over 65, 5% are female headed households and 64% are husband and wife households.

The average household size is 2.51 persons per household and the average family size is 3.07 persons per family.

In 2000, of the 4,622 households in NPU A, 31% of households had children under age 18 and 25% were single person households. The average household size was 2.44 persons per household.

2010 Household and Group Quarter Population - NPU A

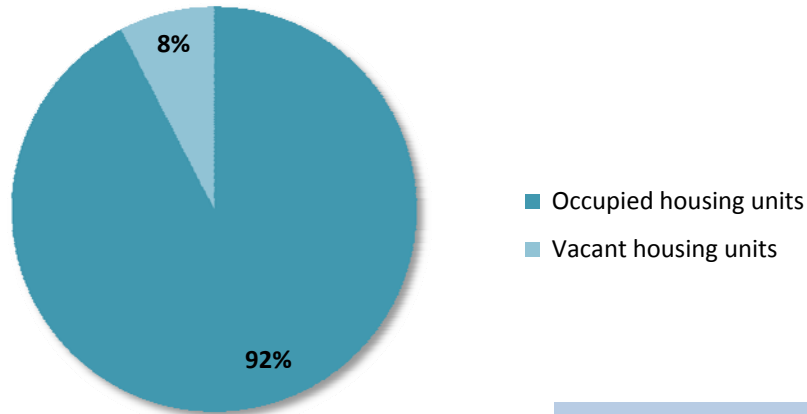


All of the NPU A population lives in households and none live in Group Quarters.



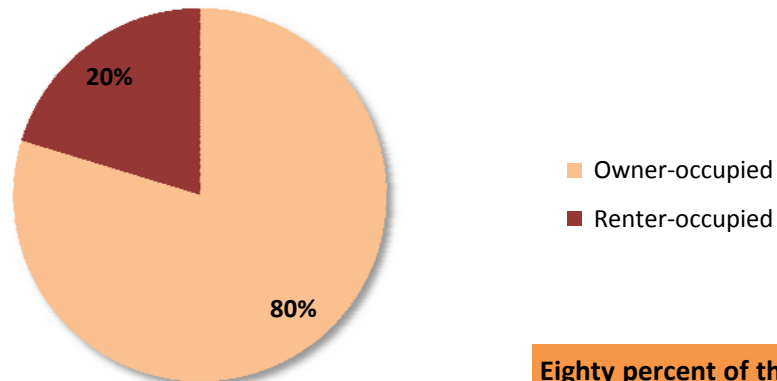
HOUSING

2010 Housing Occupancy - NPU A



NPU A has 5,041 housing units, an increase of 64 units (1%) from 4,977 in 2000. 92% are occupied and 8% are vacant. Rental units have 7% vacancy rate while owner occupied units have a 3% vacancy rate.

2010 Housing Tenure - NPU A



Eighty percent of the occupied housing units are owner occupied and 20% are renter occupied. In 2000, 78% of the units were owner occupied and 22% were renter occupied.

Renter occupied units have a smaller household size (1.7) than owner occupied units (2.7).