

**April 21, 2026**

**J.E. BOONE BLVD –  
COLLIER DRIVE  
SIDEWALK  
INSTALLATION**

Public Information Open House

**CITY OF ATLANTA**



**DEPARTMENT OF TRANSPORTATION**

Mayor Andre Dickens

ATLDOT Commissioner Solomon Caviness IV

# Moving Atlanta Forward Pillars



**Moving Atlanta Forward**

- One Safe City
- A City of Opportunity for All
- A City Built for the Future
- Effective and Ethical Government

# Agenda



**6:00 – 6:05 P.M.**

Welcome

**6:05 – 6:10 P.M.**

Project Team

**6:10 – 6:30 P.M.**

Project Overview

**6:30 – 6:50 P.M.**

Community Discussion

**6:50 – 7:00 P.M.**

Closing Remarks



# PROJECT TEAM



# Project Team



## **Bryon Amos**

City of Atlanta Councilmember (District 3)

## **Andrea L. Boone**

City of Atlanta Councilmember (District 10)

## **Solomon Caviness IV**

Commissioner, ATLDOT

## **Lenor Bromberg, PE**

Deputy Commissioner, Engineering, ATLDOT

## **Dameon Simmons, PMP**

Program Manager, ATLDOT

## **Raj Shah, PE**

Project Manager, ATLDOT

## **Bryan Ricks, PE, MBA**

Consultant Project Manager, RS&H, Inc.

# Project History & Benefits

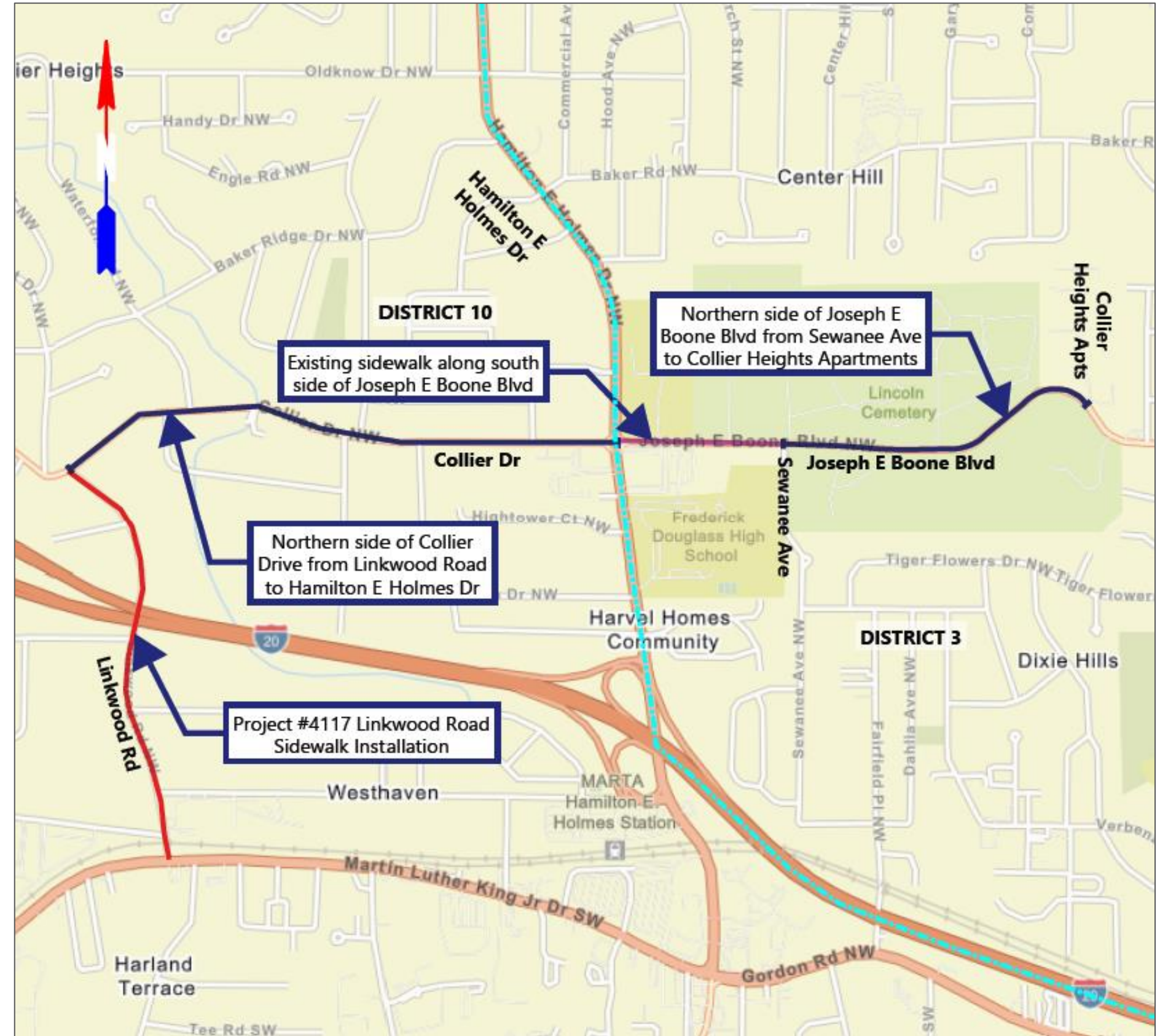
- **Initiated by the public's request to extend sidewalk along J.E. Boone Blvd/Collier Dr**
- **Supported by District 3 and District 10 council members**
- **Serves as a connection to existing sidewalk**
- **Provides improved pedestrian flow along corridor**
- **Will be constructed within the existing right-of-way**
- **Easements may be needed for construction**



# PROJECT OVERVIEW



# J.E. Boone Blvd-Collier Dr Sidewalk Installation Project Map



# Project Description

## SIDEWALK AND ADA RAMP UPGRADES

- **Installation of missing sidewalks to provide continuous pedestrian access**
- **Construction and maintenance of proposed and existing sidewalk**
  - Restriping, pedestrian crossing improvements, American with Disabilities Act (ADA) upgrades
  - Drainage assessment and repair and curbing
- **New continuous sidewalk segments:**
  - Collier Drive from Linkwood Road to Hamilton E Holmes Drive
  - J.E. Boone Blvd from Sewanee Avenue to Collier Heights Apartments

# Projects Nearby

## OTHER SIDEWALK AND ADA RAMP UPGRADES

- **Project #4117 Linkwood Rd Sidewalk Installation**
  - Currently in 30% preliminary plans phase
  - PIOH held in February 2026
  - Anticipated completion of design: April 2027
  - Anticipated completion of construction: October 2028
- **Project #4044 J.E. Boone Blvd Safe Street Improvements**
  - Currently in 60% preliminary plans phase
  - Anticipated completion of design: October 2026
  - Anticipated completion of construction: May 2027
- **Project #1132 J.E. Boone Blvd Resurfacing**
  - Currently in construction
  - Anticipated completion of construction: April 2026

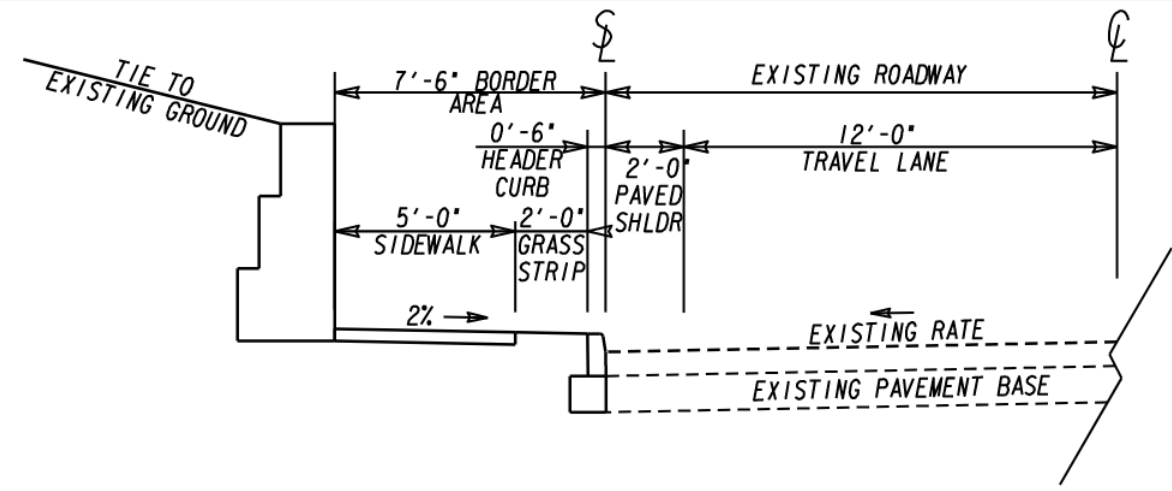
J.E. Boone Blvd-Collier Dr Sidewalk Installation

# Project Status

## CURRENT PHASE: ENGINEERING/DESIGN

- **November 2025: Notice to proceed for design**
- **December 2025: Start of site survey work**
- **March 2026: Survey data collection completed**
- **April 2026: Public Information Open House**
- **December 2026: Anticipated completion of 30% Preliminary Design**

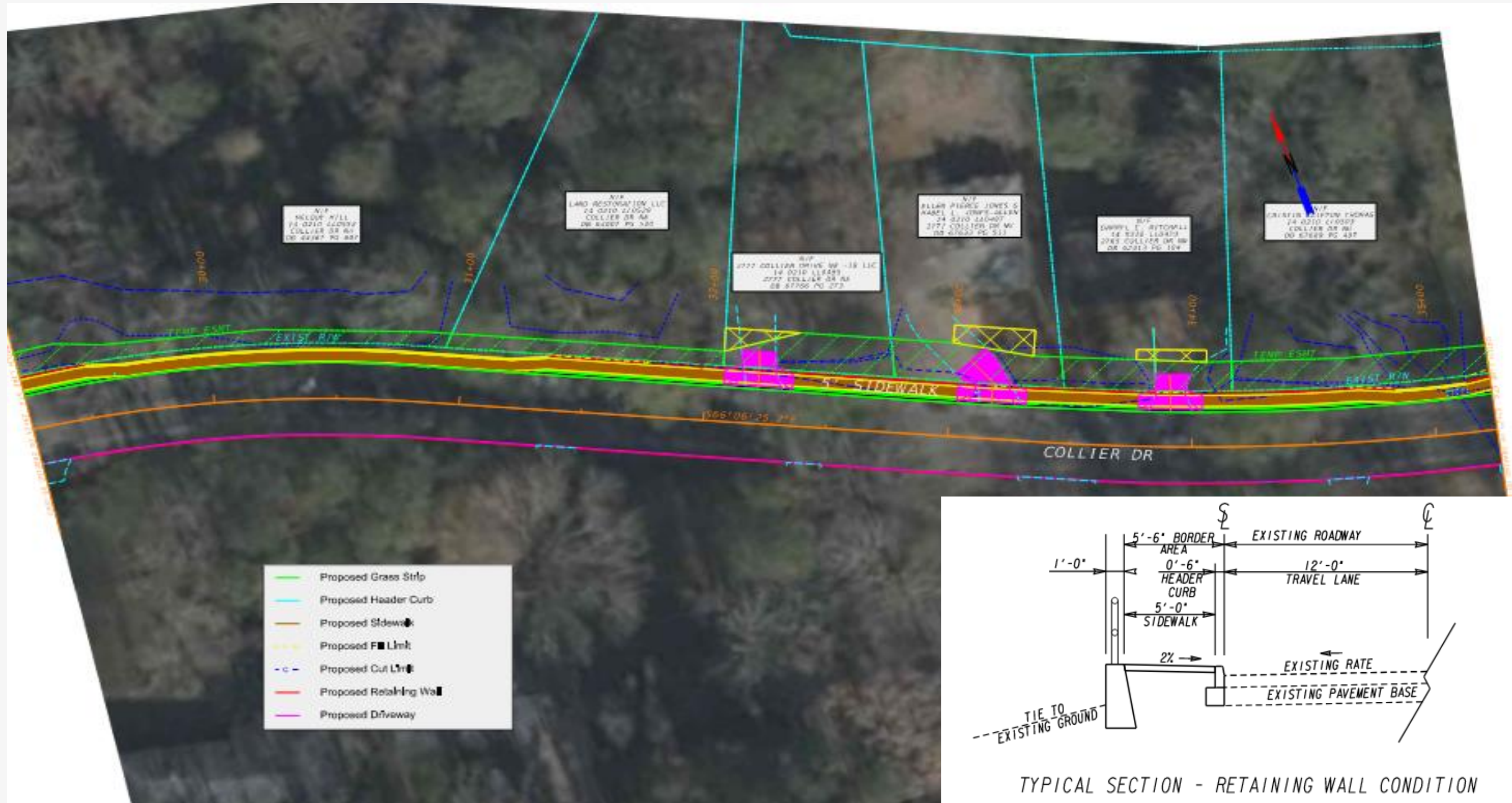
# Collier Drive from Linkwood Road to Waterford Road



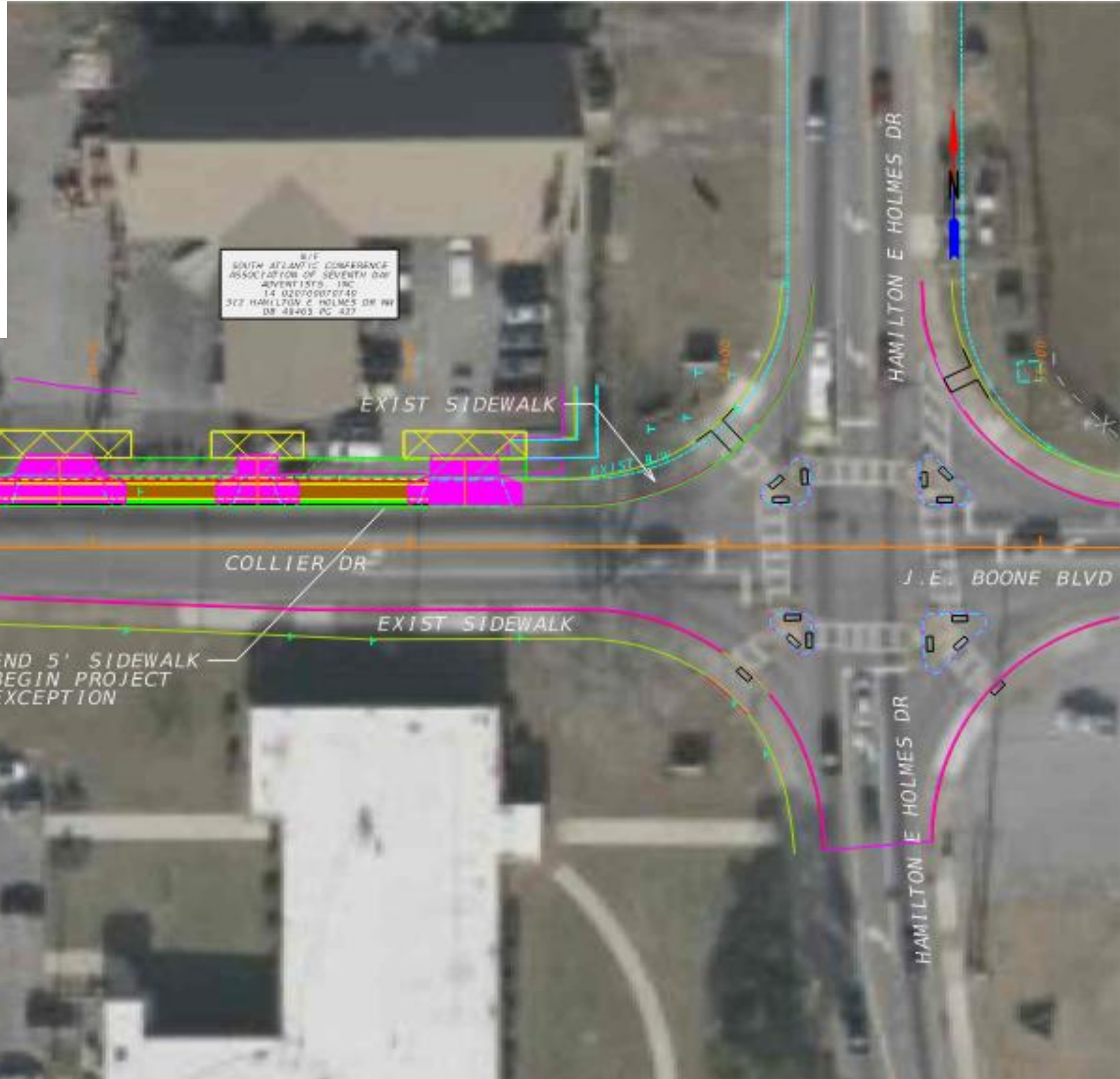
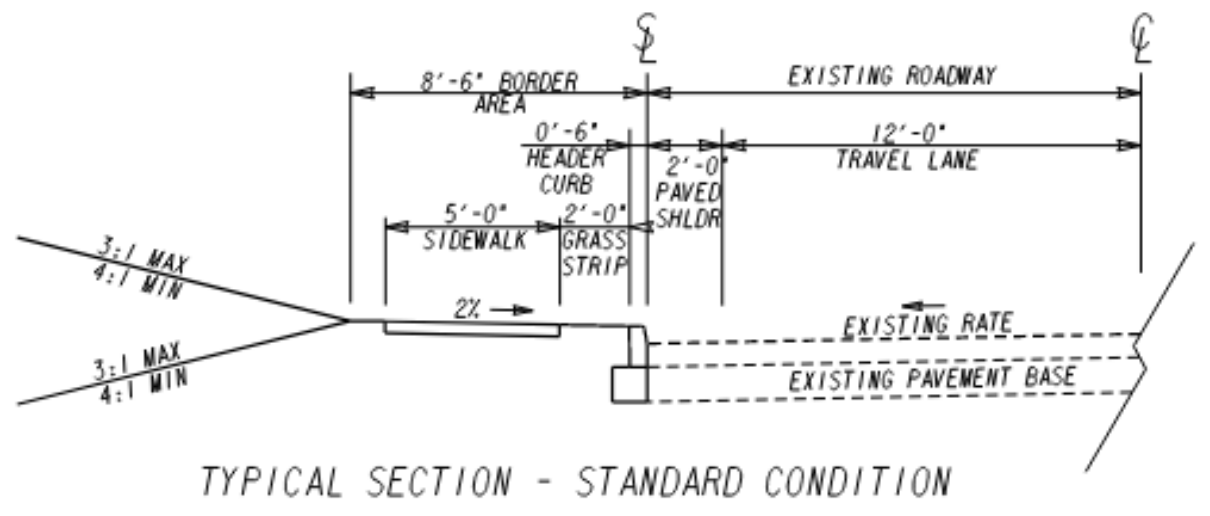
TYPICAL SECTION - RETAINING WALL CONDITION



# Collier Drive from Waterford Road to Chalmers Drive

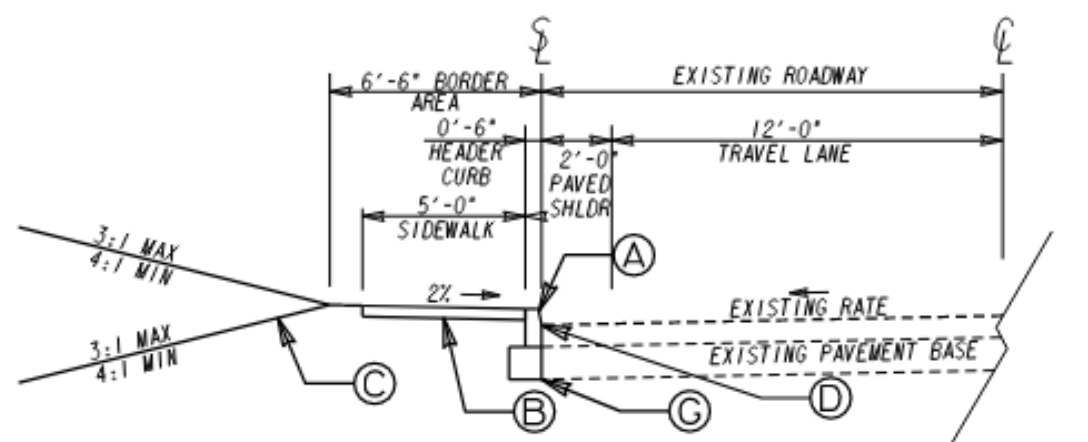


# Collier Drive at Hamilton E. Holmes Drive

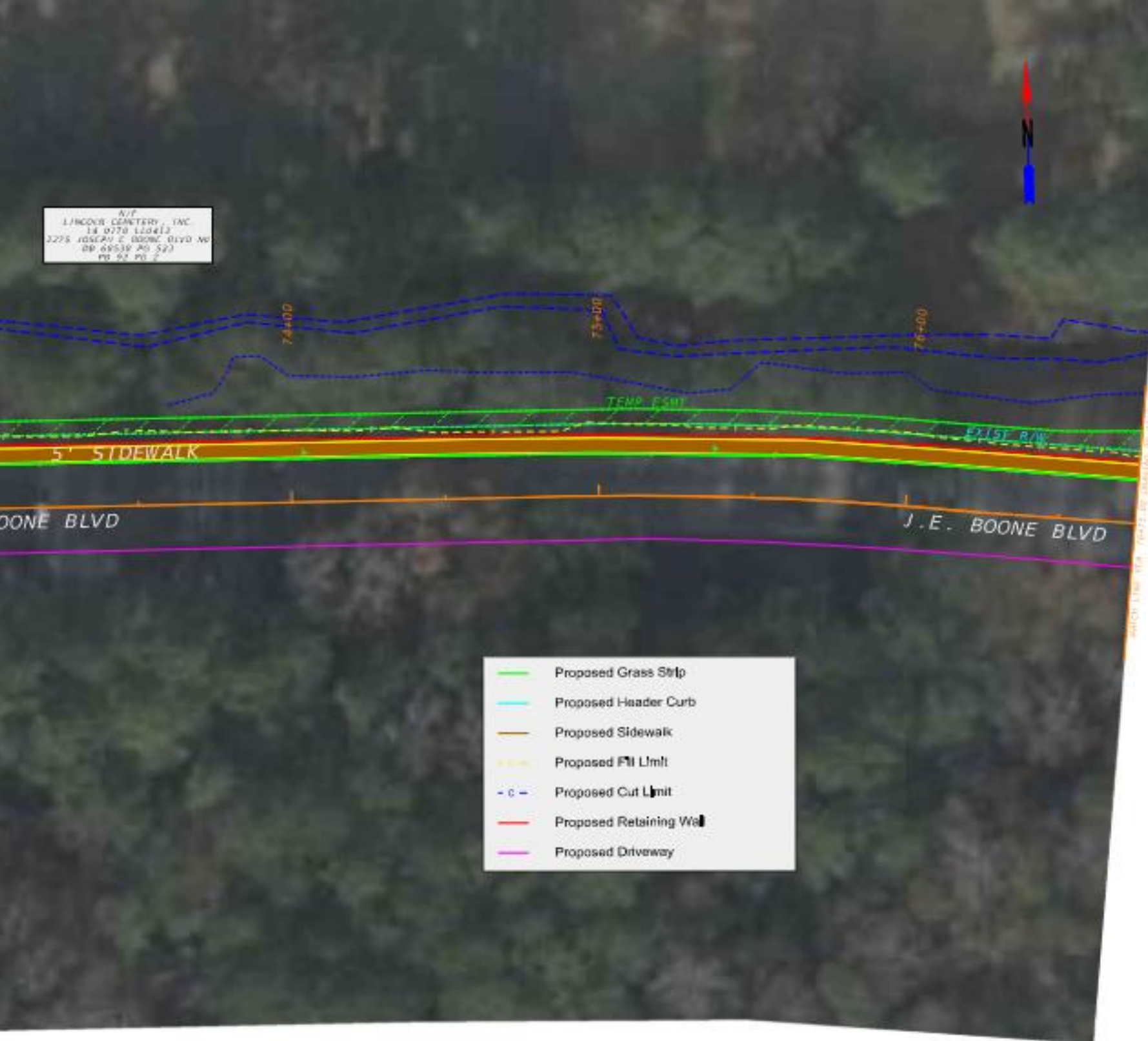


- Proposed Grass Strip
- Proposed Header Curb
- Proposed Sidewalk
- - - Proposed Fill Limit
- - - Proposed Cut Limit
- Proposed Retaining Wall
- Proposed Driveway

# J.E. Boone Blvd at Sewanee Ave



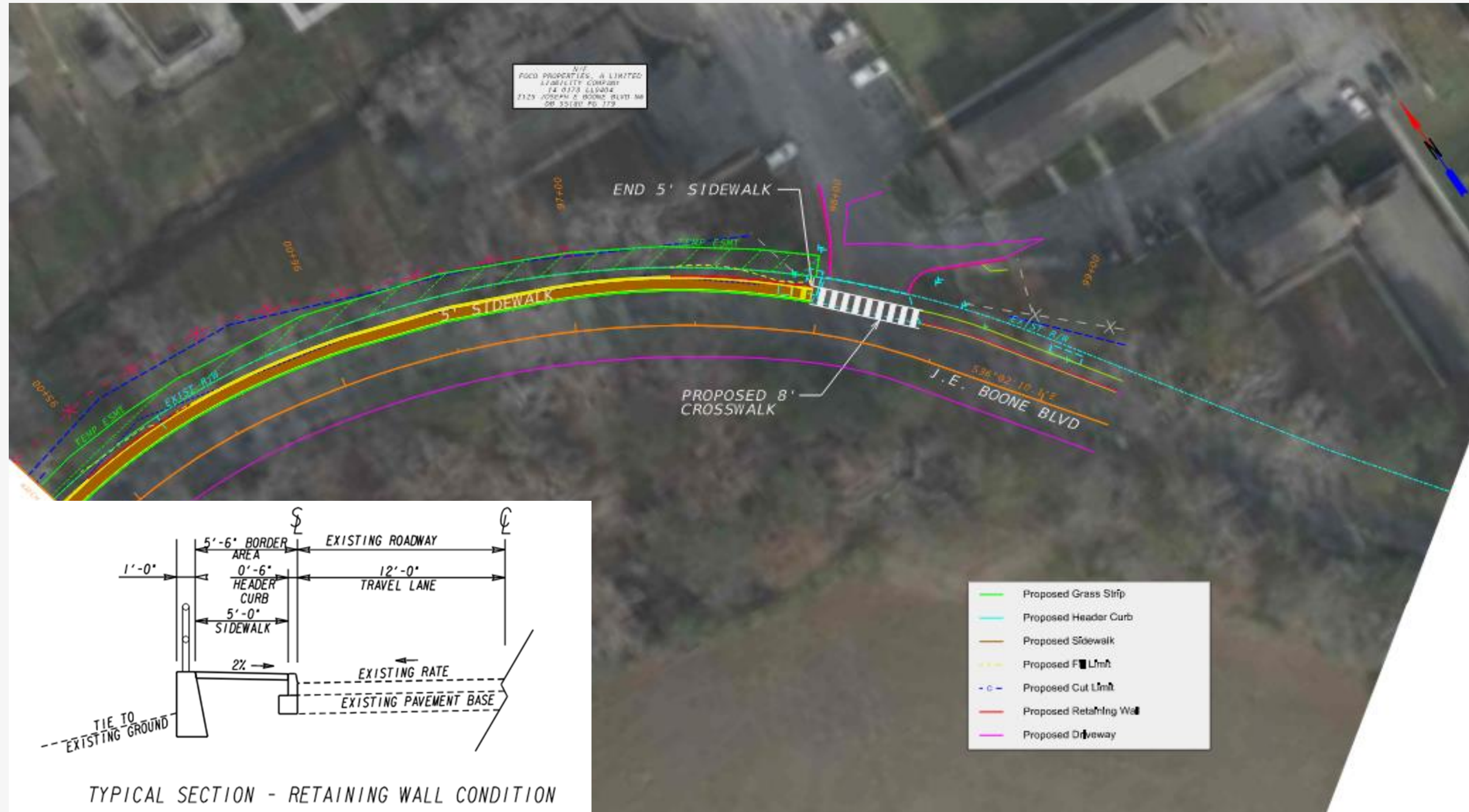
TYPICAL SECTION - NARROW WIDTH CONDITION



# J.E. Boone Blvd at Lincoln Cemetery Entrance



# J.E. Boone Blvd at Collier Heights Apartments



J.E. Boone Blvd-Collier Dr Sidewalk Installation

# Existing Conditions



J.E. Boone Blvd between Sewanee Ave & Lincoln Cemetery Entrance Looking East

J.E. Boone Blvd-Collier Dr Sidewalk Installation

# Existing Conditions



Collier Dr between Simon Terrace & Chilton Dr Looking West

# Anticipated Impacts

- **Sidewalk installation and grading slopes to existing ground will result in some tree removal and tree replacement.**
- **Easement is required for the construction of slopes**
  - Ranges from 5' to 25' beyond the existing property line for grading and vegetation (or roughly 20' to 40' beyond the existing edge of pavement)
  - If there are impacts to your property, you will be notified as to the nature of those impacts.
- **Masonry walls proposed between Linkwood Rd and Waterford Rd, and fill walls with handrails used where needed to reduce construction impacts.**

# Next Steps

- **1<sup>st</sup> Submission Utilities (Anticipated June 2026)**
- **30% Preliminary Design Completion (Anticipated December 2026)**
- **Design Completion (Anticipated August 2027)**
- **Construction Completion (Anticipated March 2029)**

# Community Discussion



# KEEPING YOU INFORMED

# Project Updates

## SUBSCRIBE FOR EMAIL UPDATES

- Send an email to: [atldot@atlantaga.gov](mailto:atldot@atlantaga.gov)
- Subject heading: “J.E. Boone Blvd-Collier Dr Sidewalk Installation Project Updates”
- Request to receive updates and meeting invitations on project referenced in heading

# Visit our website and follow us on social media



[atldot.atlantaga.gov](https://atldot.atlantaga.gov)



City of Atlanta Department of Transportation (ATL DOT)



@ATL DOT



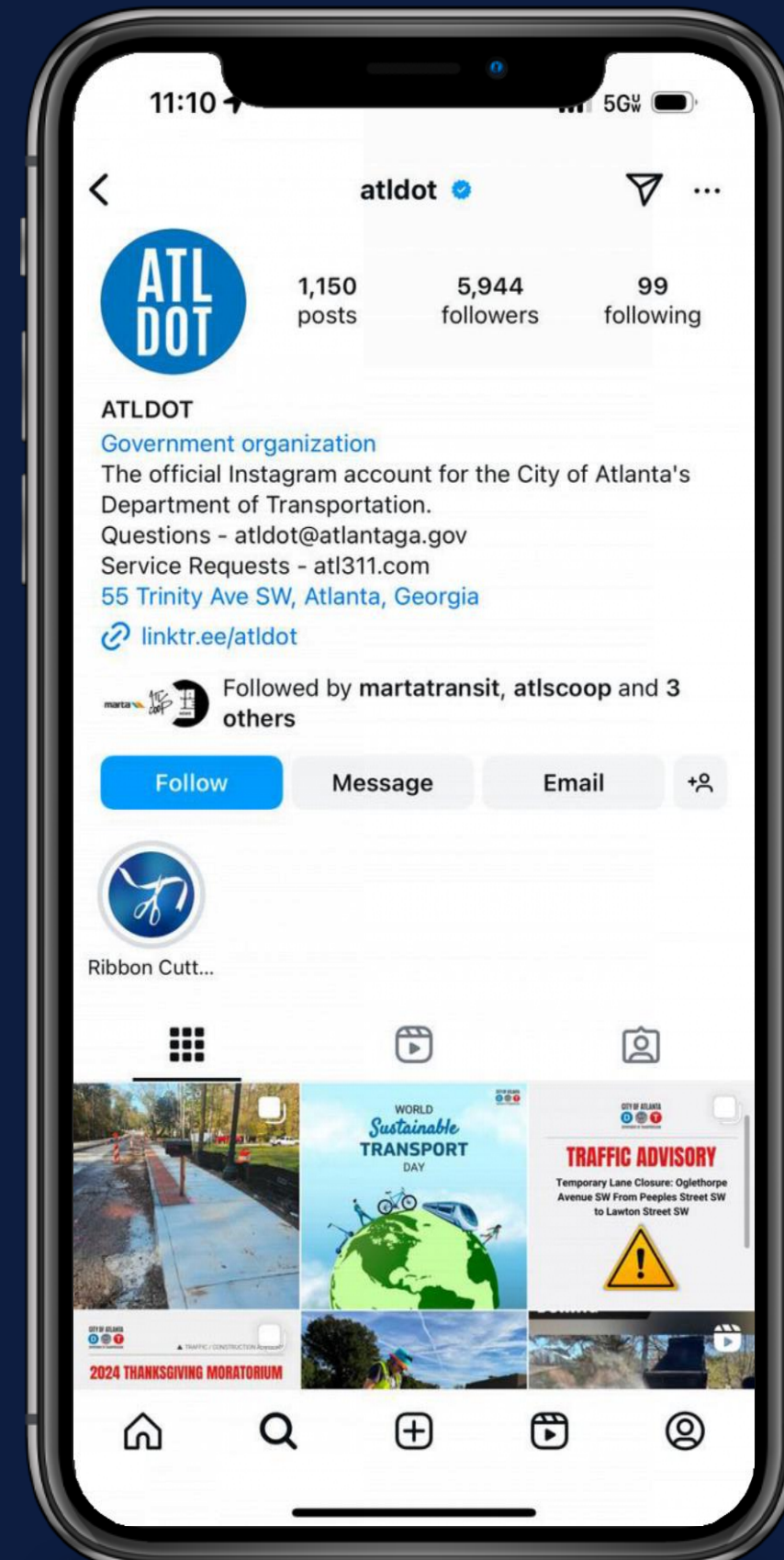
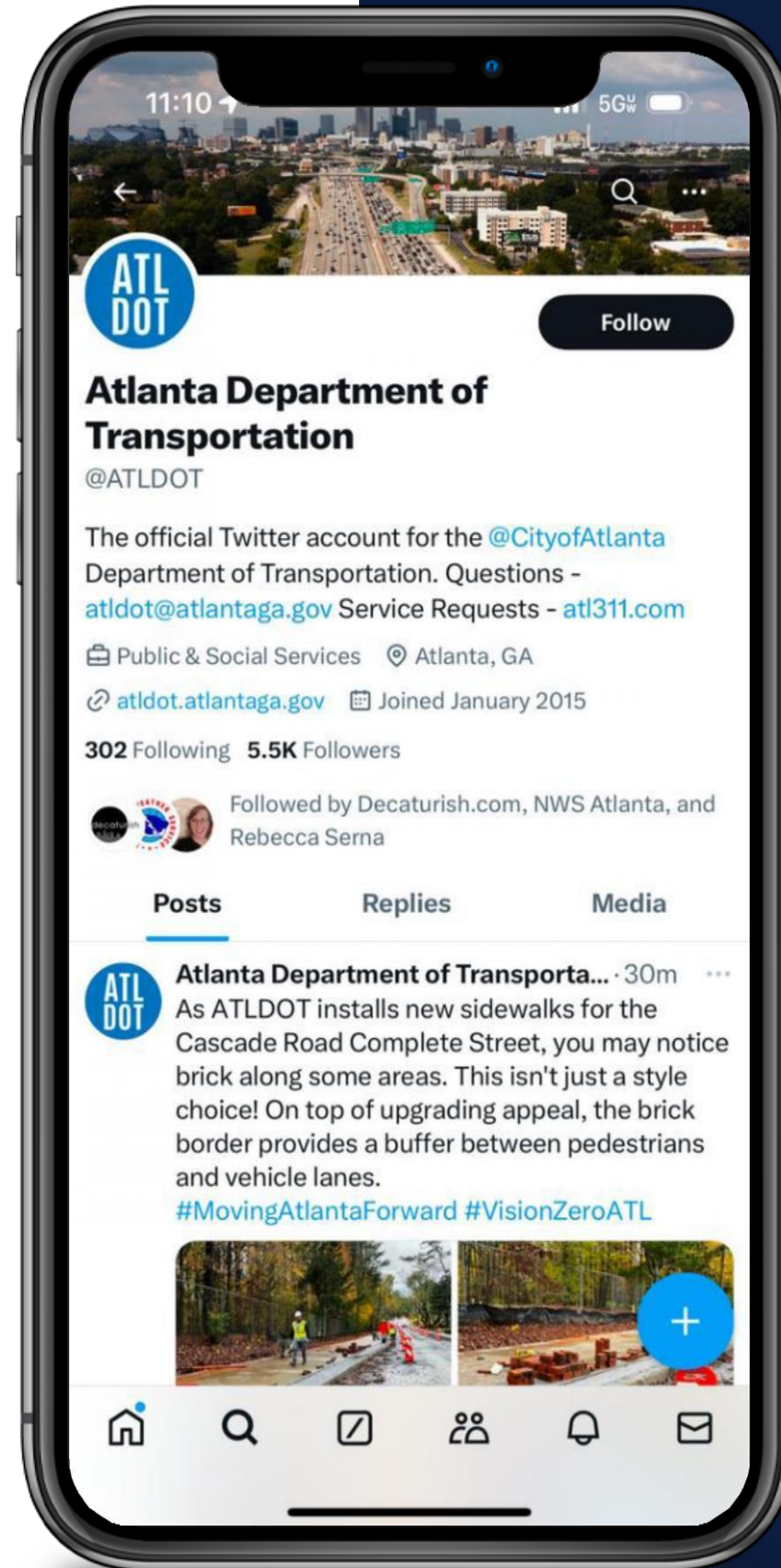
[.com/ATL DOT](https://www.facebook.com/ATL DOT)



@ATL DOT



City of Atlanta Department of Transportation



**Thank you!**